

**Miele**

I am  
**MasterLine**

Your new dishwasher for first-class performance  
and hygiene in your everyday working life.



**Miele Professional. Immer Besser.**

# I am there for you.

I am MasterLine, your powerful, durable and efficient dishwasher. I am designed to rise to the challenges of commercial dishwashing and promise to reduce your workload in the hustle and bustle of everyday life. Want spotlessly clean and hygienic crockery in next to no time?

No problem! Modern Miele technologies, intuitive touch controls and cycle times of only 5 minutes\* produce outstanding results, streamline processes and, with each wash cycle, leave you more time for what really counts: Working with the people you are there for.

## I am ready.

I see to the dishwashing so that your residents, children, patients or guests get more of your attention:

- ✓ **Care and nursing homes**
- ✓ **Schools and nurseries**
- ✓ **Hospitals and clinics**
- ✓ **Hotels, restaurants and canteens**





**Very short cycles of only 5 minutes\***



**Special-purpose programmes and Dry+ technology**



**Intuitive touch controls**



**New convenience and safety features**



**Flexible basket design**



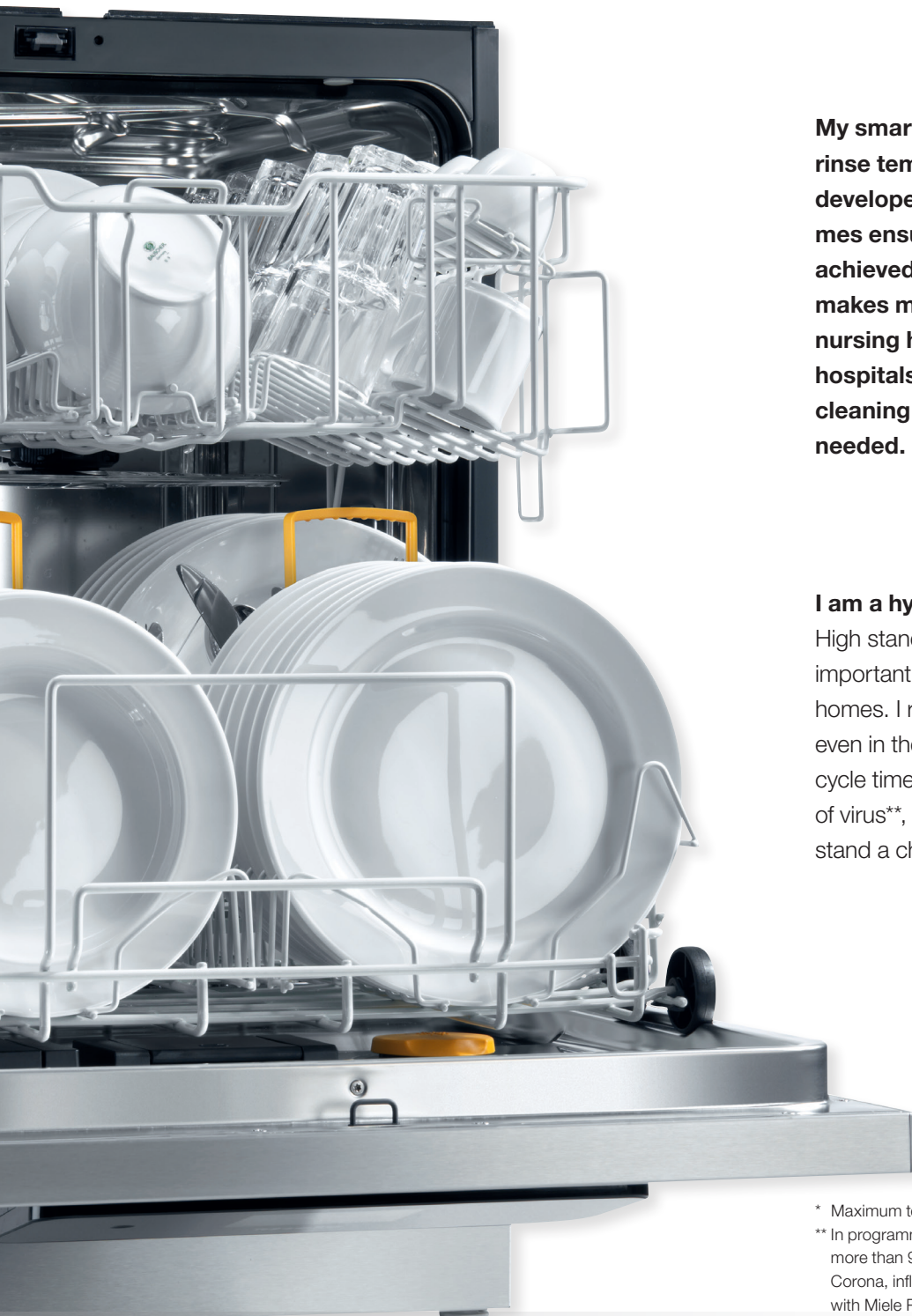
**Networking with Miele MOVE**



\* Cycle time dependent on on-site connection. 5 minutes when connected to 3N AC 400 V 50 Hz and 65 °C hot water.



# I am your cleaning specialist.



**My smart fresh water system, high final rinse temperature of 85 °C\* and specially developed hygiene and drying programmes ensure that excellent results are achieved in the shortest of times. That makes me the ideal choice for care and nursing homes, child-care facilities and hospitals where the highest levels of cleaning performance and hygiene are needed.**

## **I am a hygiene guard.**

High standards of hygiene have never been so important – in particular in hospitals and nursing homes. I remove 99.999% of most bacteria – even in the 'Super Short' programme with a cycle time of only 5 minutes! What's more, strains of virus\*\*, such as Corona or Norovirus, don't stand a chance with me.

\* Maximum temperatures depend on the model.

\*\* In programmes Hygiene plus or Hygiene (depending on model), more than 99.9% of enveloped and non-enveloped viruses (e.g. Corona, influenza and Noro viruses) are removed in combination with Miele ProCare Shine 10 A, 11 OB and 12 GC detergents.

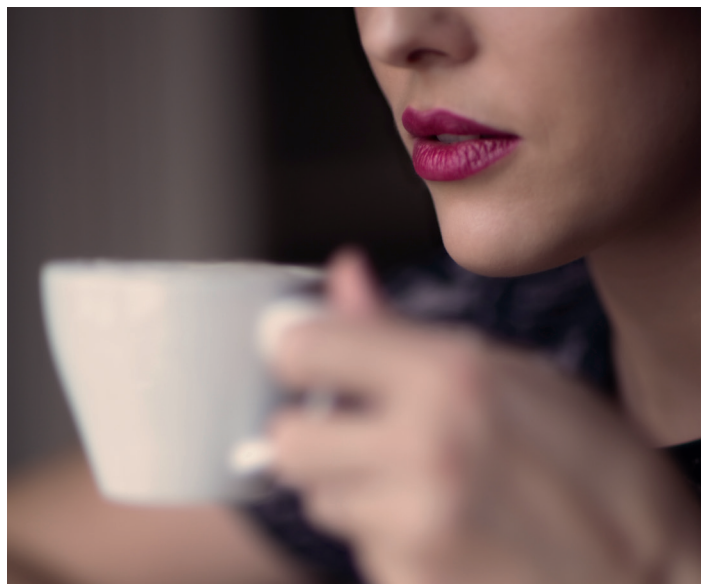


**I am a drying specialist.**

My innovative Dry+ technology dries your crockery and even plastic items fast and hygienically clean. Plates, cups and cutlery are ready for use again in next to no time. Time-consuming hand drying?  
Not with me!

**I am a lipstick remover.**

Removing persistent coffee and tea stains and even lipstick without a trace? Nothing is simpler than that! Thanks to coordinated dishwashing technology, I remove soil and stains that are difficult to remove by hand.





# I am your time saver.

**Sparkling crockery available in an instant: Intelligent dishwashing technology, simple connection to a hot water supply and a powerful heat pump allow the high temperatures needed for optimum cleaning results to be reached in the shortest of times.**

**Thanks to intuitive touch controls, new convenience functions and a flexible basket design, I make light work of huge piles of crockery.**



**5 mins.**

## **I am ready in 5 minutes.**

Pushed for time? No problem! In the 'Super Short' programme, I produce exemplary cleaning results within only 5 minutes\*. This means you can benefit from up to 40 cycles per day with ease. Next one, please ...

## **I am intuitive to control.**

The two control sets M Touch Basic and M Touch Flex provide fast access to favourite programmes and allow key settings to be adjusted to individual needs – intuitively, thanks to symbols and display text in 32 languages.

The M Touch Flex version with its colour display offers additional convenience: By tapping and swiping, you can alter programme names and watch illustrative how-to sequences explaining all aspects of the of the process. Simple, safe, convenient!



*M Touch Basic*



*M Touch Flex*



\* Cycle time dependent on on-site connection. 5 minutes when connected to 3N AC 400 V 50 Hz and 65°C hot water



**I am a safety instructor.**

I sport new functions for exceptional dishwashing results and a long service life: My door lock protects against unauthorised access during a running programme and my secure filter monitoring prevents potential damage by stopping food residue from accessing the water circuit.

**I am a capacity increaser.**

Large volumes of crockery several times a day? Thanks to my two levels and my flexible design, I offer plenty of space for cups, plates and cutlery. Whether glasses, pots and pans or salad bowls: The optimised design of my baskets guarantees more space, a secure hold and ergonomic operation.





# I am your cost reducer.

## Fully optimised dishwashing:

With flexible and customised parameters, automatic dispensing and connectivity to Miele MOVE\* I help maximise efficiency to reduce costs throughout my entire life.

Plus, I am particularly easy to install and commission.

**40** X  
cycles per day

## I am designed for 40 cycles per day.

Thanks to special-purpose programmes, short cycles and durable components, I make light work of up to 40 programme cycles a day. An ideal solution for hotels and restaurants, offices and schools reliant on having to run many cycles each day.

## I am connected.

Linked to Miele MOVE\*: Thanks to my connectivity, I am able to document all programme cycles and provide support in optimising processes. An intuitive dashboard and direct service interfaces help accelerate and improve processes. Never before was the reprocessing of crockery, glassware and cutlery as transparent, efficient and professional.

\* Availability may vary by region.



Miele  
**MOVE**



**I am easy to install.**

Practical hose tidies for water and power connections as well as convenient height adjustment from the front simplify installation in recesses and tall units.

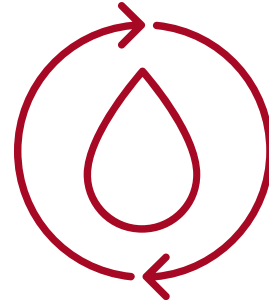
This means that I fit into any run of kitchen cabinets with ease.



# I am

# your sustainability driver.

**Thinking ahead pays dividends:**  
I use durable components made from recyclable materials and deploy efficient technologies such as Dry+ and automatic dispensing in order to save water, electricity and detergent with each cycle.



# 28,000

**cycles tested**

**I am built to last.**

Uninterrupted use, persistent residues, different types of crockery: I have been tested for 28,000 cycles and happily rise to the enormous challenges of commercial dishwashing. Quality manufacturing and intelligent technologies ensure the same results whether it is the first cycle or after thousands of cycles.

**I am a solution provider.**

Alongside optimised results, I offer many other benefits that come with being a Miele Professional customer. We provide you with comprehensive advice on our machines and gladly support you with our reliable 24/7 service, tailored maintenance contracts, practical accessories and consumables such as chemicals and detergents.

**I am compliant with commercial use.**

Occupational safety first: To protect your staff as they go about their daily work, I am fully compliant with the demands of the EU Machinery Directive.





# I am flexible.

## MasterLine

Features	PFD 400 Speed	PFD 401 Speed Plus	PFD 402 Speed Air	PFD 404 Hygiene	PFD 405 Hygiene Air	PFD 407 Hygiene Plus *
<b>Controls</b>						
M Touch Basic	✓	✓				
M Touch Flex			✓	✓	✓	✓
<b>Programmes and performance</b>						
Shortest cycle [mins.]	8	5	5	5	5	5
Plate capacity (plates/h)	285	456	456	456	456	456
No. of programmes	9	11	11	12	12	12
- thereof hygiene programmes	1	1	1	2	2	3
Max. final rinse temperature [°C]	70	70	80	85	85	93
Modifiable programme names			✓	✓	✓	✓
<b>Features</b>						
AutoOpen/AutoClose				✓	✓	✓
Door lock (code protected if required)				✓	✓	✓
Filter monitoring		✓	✓	✓	✓	✓
Dry+ drying			✓		✓	
Steam condenser				✓		✓
<b>Dispenser systems</b>						
Combination door dispenser	✓	✓	✓	✓	✓	✓
Door salt container	✓	✓	✓	✓	✓	✓
DOS optional, with level-fill indicator		✓	✓	✓	✓	✓
Connection for external dispenser module [No DOS / DOS]	1 / -	2 / 1	2 / 1	2 / 1	2 / 1	2 / 1
<b>Machine dimensions</b>						
External dimensions H   W   D [mm]- Freestanding unit	835-895   598   598	835-895   598   598	835-895   598   598	835-895   598   598	835-895   598   598	835-895   598   598
External dimensions H   W   D [mm] - Undercounter unit	820-880   598   580	820-880   598   580	820-880   598   580	820-880   598   595	820-880   598   580	820-880   598   595
<b>Water connection (max. 65 °C, max. 60° dH)</b>						
No. of water connections	1	2	2	2	2	2

All models are optionally available as freestanding or undercounter models in lotus white and stainless steel.  
\* Available in IE only.

