

Installation plan

Washing machine



PW 5064 MOPSTAR 60

To avoid the risk of accidents or damage to the machine, it is **essential** to read operating and installation instructions before installation and commissioning. This prevents both personal injury and damage to the machine.

en - GB

10 144 110 / 01

Legend:



Connection required

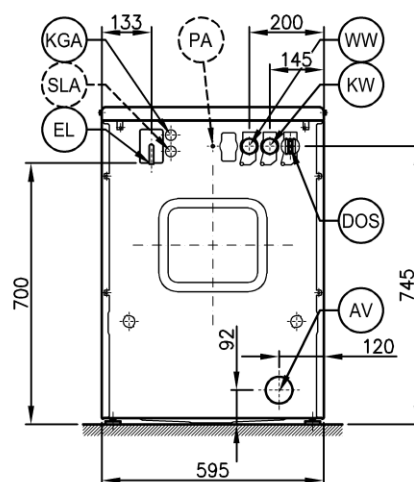
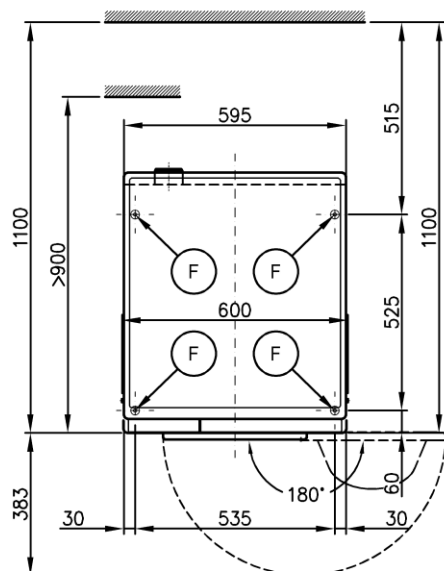
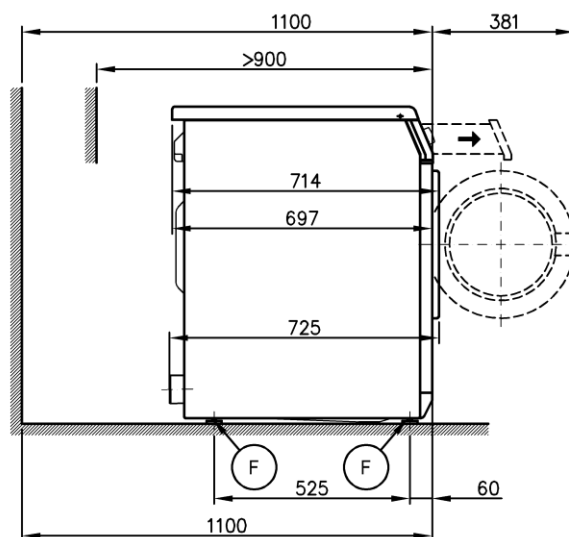
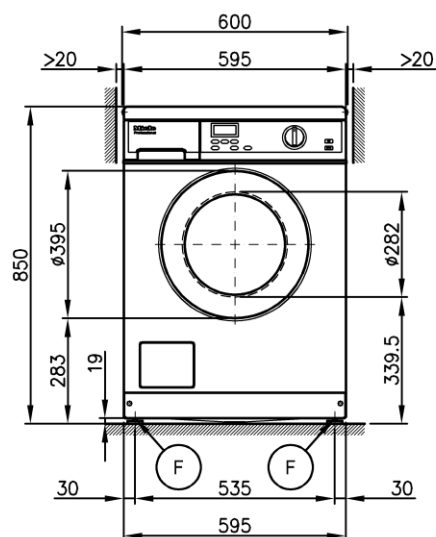


Connection optional or required,
depending on model

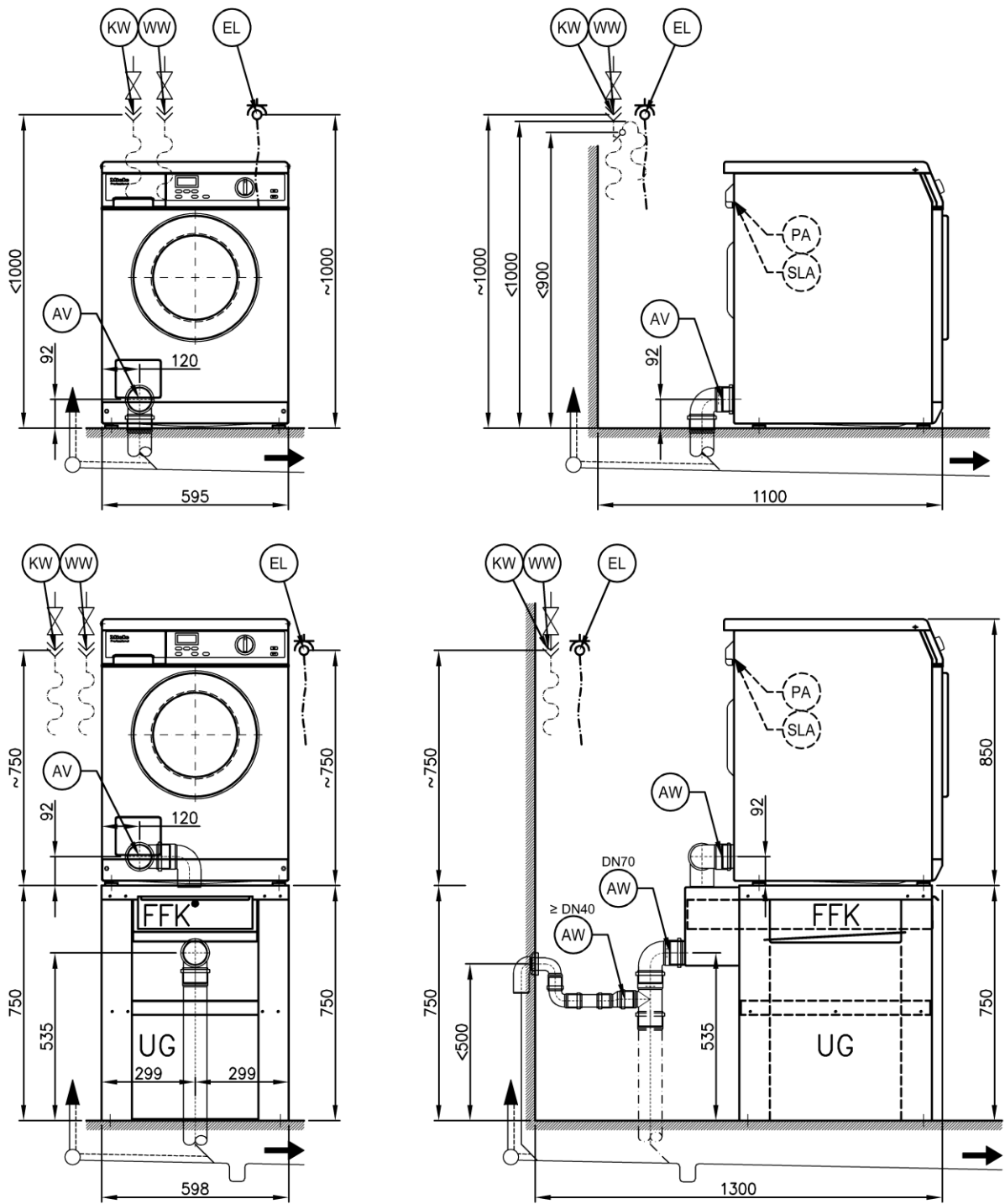
AV Dump valve
AW Drain connection
B Machine anchors
BW Grey water connection
DOS Dispenser connection
EL Electrical connection
F Machine feet, adjustable
KG Payment system
KGA Payment system connection

KW Cold water connection
LP Drain pump
PA Equipotential bonding
SLA Peak-load connection
UG Box plinth
UO Open plinth
WTV Washer-dryer stacking kit
WW Hot water connection
XKM Communication module

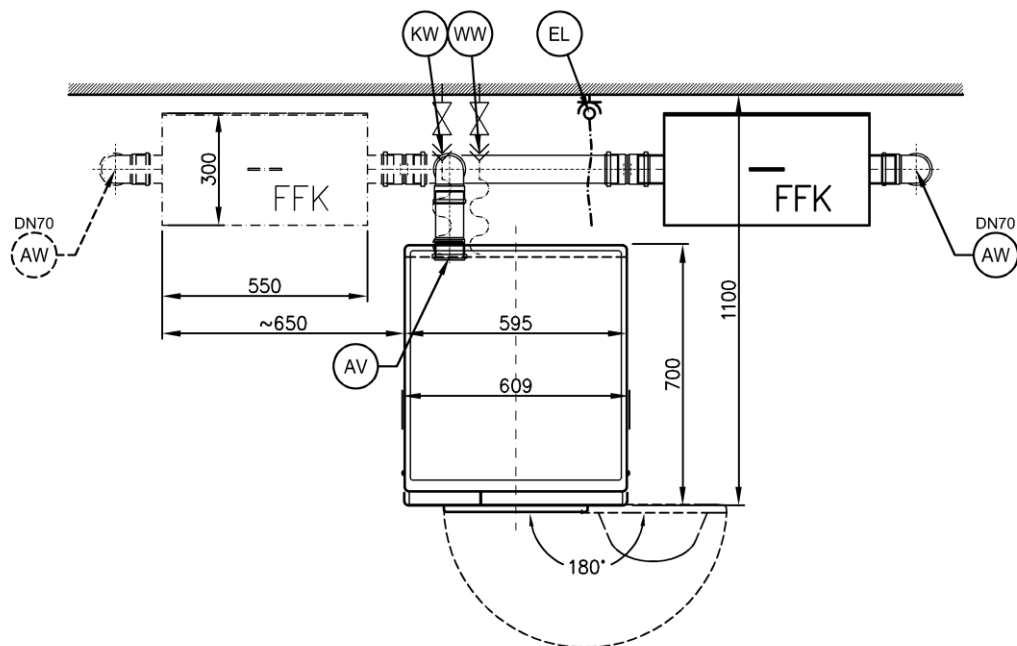
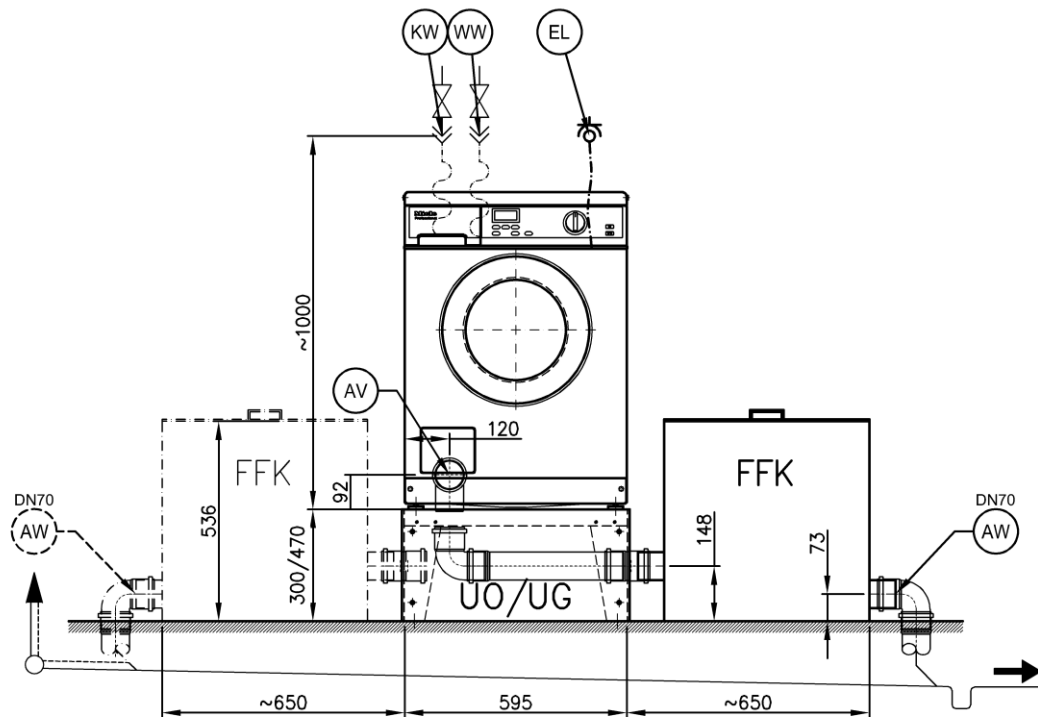
Machine dimensions



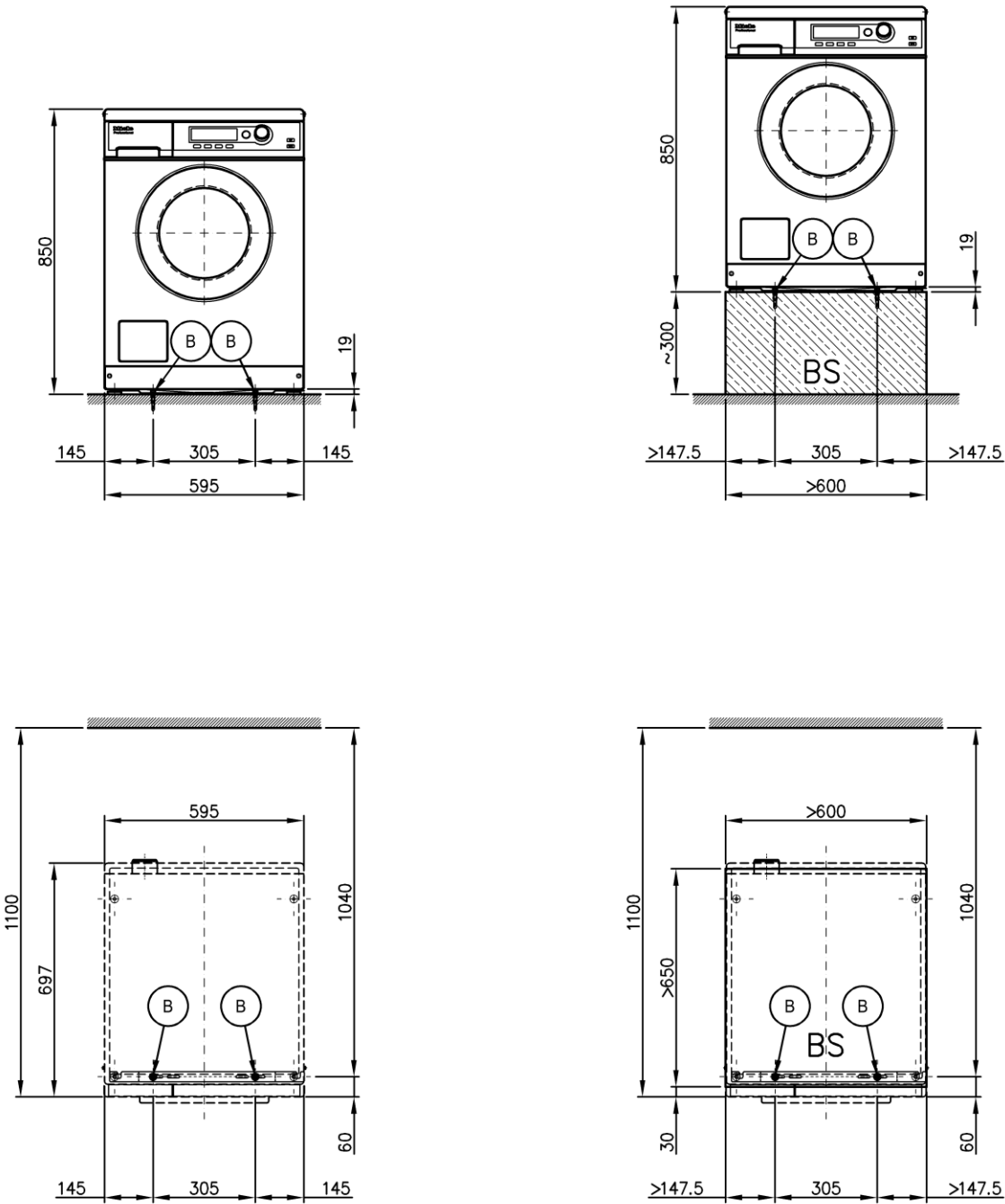
Installation



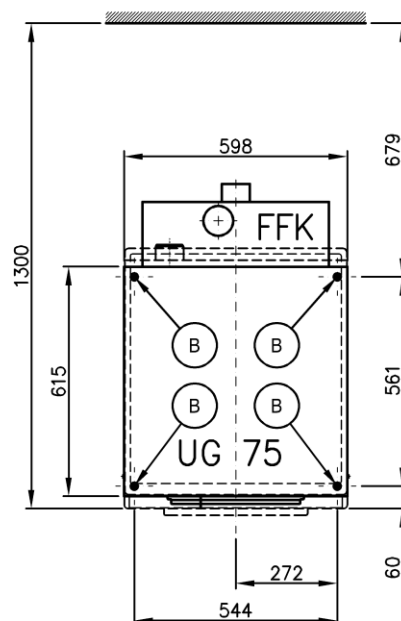
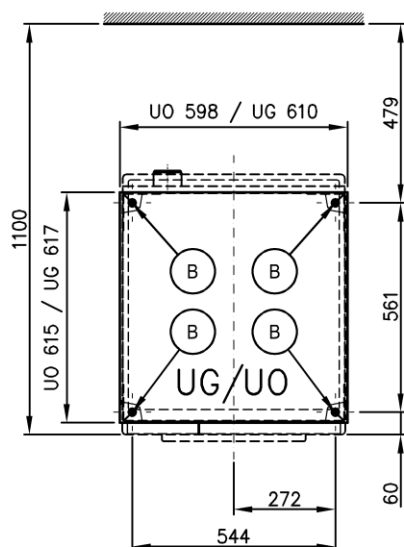
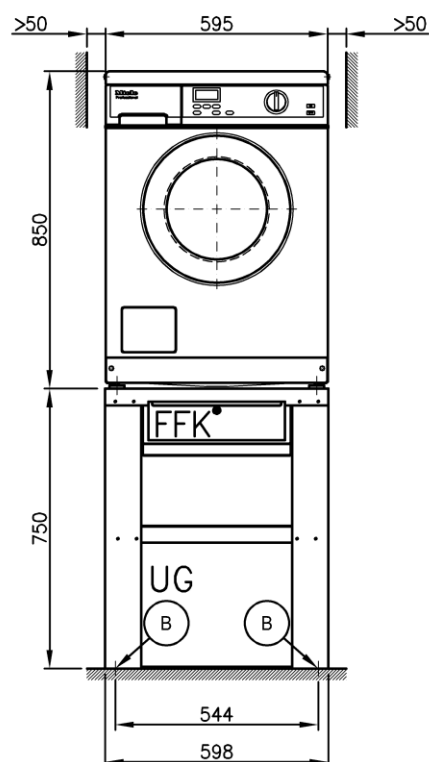
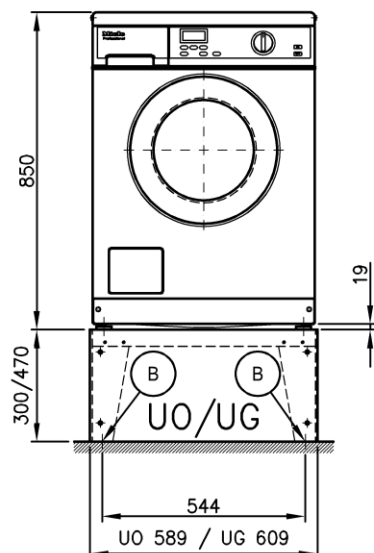
Installation with FFK 01



Installation



Installation



Technical data

PW 5064 AV		
Drum volume	l	59
Load capacity	kg	6.5
Door opening diameter	mm	282
Max. spin speed	rpm	1400
g factor		526
Residual moisture (standard load per DIN 60456)	%	<25

Electrical connection (EL)

Standard voltage			2N AC 400 V
Frequency	Hz	50	
Total rated load	kW	4.8	
Fuse rating (B trip rating according to EN 60898)	A	2 x 16	
Supply lead min. cross-section	mm²	4 x 1.5	
Supply lead without plug for hard-wired connection		●	
Length of supply lead	mm	1800	
Alternative voltage (convertible by Service)			1N AC 230 V
Total rated load	kW	2.5	
Fuse rating (B trip rating according to EN 60898)	A	1 x 16	
Supply lead min. cross-section	mm²	3 x 1.5	

Variations in the following countries:

Standard voltage 13A (GB only)			1N AC 230 V
Frequency	Hz	50	
Total rated load	kW	2.5	
Fuse rating (B trip rating according to EN 60898)	A	1 x 13	
Supply lead min. cross-section	mm²	3 x 1.5	
Supply lead without plug for hard-wired connection		●	
Length of supply lead	mm	2000	
Alternative voltage (convertible)			2N AC 400 V
Total rated load	kW	4.8	
Fuse rating (B trip rating according to EN 60898)	A	2 x 13	
Supply lead min. cross-section	mm²	4 x 1.5	

Standard voltage 25A (GB only)			1N AC 220-240 V
Frequency	Hz	50	
Total rated load	kW	4.4 - 5.2	
Fuse rating (B trip rating according to EN 60898)	A	1 x 25	
Supply lead min. cross-section	mm²	3 x 2.5	
Supply lead without plug for hard-wired connection		●	
Length of supply lead	mm	2000	

Standard voltage (DK and S only)			3N AC 400 V
Frequency	Hz	50	
Total rated load	kW	4.8	
Fuse rating (B trip rating according to EN 60898)	A	3 x 10	
Supply lead min. cross-section	mm²	5 x 1.5	
Supply lead without plug for hard-wired connection		●	
Length of supply lead	mm	2000	

Standard voltage (DK only)			1N AC 220-240 V
Frequency	Hz	50	
Total rated load	kW	2.1 - 2.4	
Fuse rating (B trip rating according to EN 60898)	A	1 x 10	
Supply lead min. cross-section	mm²	3 x 1.5	
Supply lead without plug for hard-wired connection		●	
Length of supply lead	mm	2000	

● = standard, ○ = optional, + = only on request, - not available

Technical data

PW 5064 AV		
Standard voltage (B only)		
3 AC 230 V		
Frequency	Hz	50
Total rated load	kW	4.8
Fuse rating (B trip rating according to EN 60898)	A	3 x 20
Supply lead min. cross-section	mm ²	4 x 2.5
Supply lead without plug for hard-wired connection		●
Length of supply lead	mm	1,800
Alternative voltage (convertible)		
2N AC 400 V		
Total rated load	kW	4.8
Fuse rating (B trip rating according to EN 60898)	A	2 x 16
Supply lead min. cross-section	mm ²	4 x 1.5
Alternative voltage (convertible)		
1N AC 230 V		
Total rated load	kW	2.5
Fuse rating (B trip rating according to EN 60898)	A	1 x 16
Supply lead min. cross-section	mm ²	3 x 1.5
Standard voltage (N only)		
1N AC 220-240 V		
Frequency	Hz	50
Total rated load	kW	2.95 - 3.45
Fuse rating (B trip rating according to EN 60898)	A	1 x 16
Supply lead min. cross-section	mm ²	3 x 1.5
Supply lead with plug		●
Length of supply lead	mm	2000
Alternative voltage (convertible)		
2N AC 400 V		
Total rated load	kW	4.8
Fuse rating (B trip rating according to EN 60898)	A	2 x 16
Supply lead min. cross-section	mm ²	4 x 1.5
Standard voltage (USA only)		
2 AC 208-240 V		
Frequency	Hz	60
Total rated load	kW	4.0 - 5.2
Fuse rating	A	2 x 30
Supply lead min. cross-section	mm ²	3 x AWG10
Supply lead with plug		●
Length of supply lead	mm	2000
Cold water (KW)		
Permissible water flow pressure	kPa	100 - 1000
Required flow rate (cold water connection only)	l/min	11
Required flow rate (with additional hot water connection)	l/min	10
Average water consumption (60°C standard programme)	l/h	36
Connection to be provided on site, external thread according to DIN 44991	Inch	¾"
Connection hose ½" with ¾" threaded union		●
Connection hose length	mm	1550
Hot water (WW)		
Max. water intake temperature	°C	70
Permissible water flow pressure	kPa	100 - 1000
Min. flow rate	l/min	11
Average water consumption (60°C standard programme)	l/h	13
Connection to be provided on site, external thread according to DIN 44991	Inch	¾"
Connection hose ½" with ¾" threaded union		●
Connection hose length	mm	1550
Drain valve (AV)		
Connection (ext. diameter)	mm	75 (DN70)
Drainage temperature, max.	°C	90
Max. transient flow rate	l/min	62

● = standard, ○ = optional, + = only on request, - = not available

Technical data

PW 5064 AV

Equipotential bonding (PA)

Machine connection (with installation kit)	O
--------------------------------------------	---

Peak load/energy management (SLA)

Machine connection (with installation kit)	O
Control signal voltage	AC 230 V

Communication module (XKM)

RS 232 serial interface (XKM module retrofitting kit)	O
-------------------------------------------------------	---

Liquid dispensing (DOS)

Connection for liquid detergents	●
No. of dispenser pumps, max.	6

Installation on machine feet (F)

No. of machine feet	No.	4
Machine foot, height-adjustable with thread	mm	±4
Machine foot diameter	mm	40

Anchoring (B)

Standard anchoring

Floor anchor kit (for 2 machine feet)		●
Wood screws according to DIN 571	mm	6 x 50
Rawl plugs (diameter x length)	mm	8 x 40

Anchoring of Miele plinths

Accessory: Miele plinth (fasteners included)	O	
Required anchor points	No.	4
Wood screws according to DIN 571	mm	8 x 65
Rawl plugs (diameter x length)	mm	12 x 60

Plinth floor anchoring (to be provided on site)

Machine installation on permanent plinth (concrete or masonry)		O
Plinth installation footprint (W/D)	mm	600/650
Wood screws according to DIN 571	mm	6 x 50
Rawl plugs (diameter x length)	mm	8 x 40

Machine data

Overall machine dimensions (H/W/D)	mm	850/600/725
Casing dimensions (H/W/D)	mm	850/595/665

Site-access dimensions (H/W)

Min. site-access (excl. packaging)	mm	900/600
------------------------------------	----	---------

Installation dimensions

Min. side gap	mm	20
Recommended side gap - washer-dryer stack	mm	>300
Recommended min. distance to opposite wall from machine front	mm	900
Recommended distance to opposite wall from front of machine	mm	1100

Weights and floor loads

Machine weight (net weight)	kg	105
Max. floor load in operation	N	2820
Max. floor load, static	N	1380
Max. floor load, dynamic	N	1365
Max. drum rotation frequency	Hz	22

Emissions

Emission sound pressure level in accordance with EN ISO 11203/11204	dB(A)	<70
Heat dissipation rate to installation site	W	250

● = standard, O = optional, + = only on request, - not available

Options / Accessories

	Features
Box plinth (UG)	
Box plinth, H 300 mm (UG 5005)	Galvanised plinth, stainless-steel sides
Box plinth, H 470 mm (UG 5005-47)	Galvanised plinth, octoblué stove-finished side panels
Box plinth, H 750 mm (UG 5005-75)	Galvanised plinth, octoblué stove-finished side panels
Open plinth (UO)	
Open plinth, H 300 mm (UO 5005)	Galvanised plinth, octoblué stove finish
Open plinth, H 470 mm (UO 5005-47)	Galvanised plinth, octoblué stove finish
Washer-dryer stacking kit (WTV)	
Stainless-steel kit (WTV 5062)	Washer-dryer stacking kit
Lotus white kit (WTV 5061)	Washer-dryer stacking kit
Fluff filter box (FFK)	
Fluff filter box (FFK 5005)	Fluff filter box for retrofitting on UG 5005-75 or UO 5005
Fluff filter box, incl. UG 5005-75 plinth (FFK 5005)	Fluff filter box integrated into plinth
Fluff filter box, standalone (FFK 01)	Fluff filter box, stainless steel
Payment systems (KG)	
Single unit (C 4060)	Payment system (programme operation only)
Single unit (C 4065)	Payment system (time and programme operation)
Single unit (C 4070)	Payment system for tokens and euro coins, time and programme operation
Multi-machine unit (C 5200 BT)	Base unit for GeldKarte transactions (for max. 8 machines)
ABT 5220 remote bundle	Machine monitoring with Bluetooth communication (one each per machine)
Accessories	
Connection of peak-load/energy management (BSS)	Connection for peak-load and energy management functionalities
Equipotential bonding kit	Kit (Mat. no 09439350) available from Spares
Communication module XKM (XKM RS 232-10)	Retrofitting kit XKM module with RS 232
Connection box for dispenser pumps (ASK)	Connection box for dispenser pumps and 'Container empty' signal

Installation and planning notes

Installation requirements

Electrical connection should only be made to a power supply provided in accordance with all appropriate local and national legislation and regulations.

In addition, all regulations issued by the appropriate utilities as well as standards relating to occupational safety, and all applicable valid regulations and technical standards must be observed!

Transportation and site access

The machine must not be moved without the transit bars in place. Keep the struts in a safe place. They must be re-fitted if the machine is to be moved again (e.g. when relocating machine).

General operating conditions

Ambient temperature in installation room: +2°C to +35°C.
Depending on the nature of the installation site, sound emissions and vibration may occur. Miele recommends consulting a specialist if particular requirements apply at the installation site with respect to sound emissions.

Electrical connection

Depending on the model, the machine is delivered with a supply lead with/without a plug.

The washer may only be connected to an electrical system that conforms to the national and local codes and regulations. The installation must be performed by a qualified electrician.

The appliance data plate indicates the nominal power consumption and the appropriate fuse capacity. Compare the specifications on the data plate with those of the electrical power supply.

The machine can be hard-wired or connected using a switched connection in accordance with IEC 60309-1. It is always recommended to make electrical connection via a plug and socket so that electrical safety checks, e.g. during repair or service work, can be carried out easily.

If the machine is hard wired, a dual circuit breaker must be provided on-site. When switched off there must be an all-pole contact gap of 3 mm in the isolator switch (including switch, fuses and relays according to IEC/EN 60947).

The plug connectors or isolator switch should be easily accessible for servicing work. If the machine is disconnected from the electricity supply ensure adequate measures are taken to ensure that the machine cannot be reconnected to the electricity supply until all work has been carried out.

New connections, modifications to the system or servicing of the ground conductor, including determining the correct fuse amperage, must be carried out by a qualified electrician, as they are familiar with the pertinent regulations and the specific requirements of the electric utility company.

If converting the machine to an alternative voltage, observe the instructions in the wiring diagram. Conversion must be performed by an authorised agent or a Miele service technician. The heater rating must also be properly set.

The machine must be permanently connected to the electricity supply so that the door can be opened. For this reason, it must not be connected to devices such as timers which would switch it off automatically.

References to cable cross-sections in the technical data refer only to the required supply lead. Please consult relevant local and national regulations when calculating any other wire gauges.

Cold water connection

The machine should be connected to a mains water supply in accordance with current local and national regulations on water safety.

Connection to the water supply should be carried out by a qualified plumber using a stopcock with a threaded union. If a stopcock is not available, a qualified plumber should connect the machine to the water supply.

A suitable connection hose with a threaded union is provided with the machine.

Longer hoses (2.5 or 4.0 m in length) are available from Spares as separate items.

Hot water connection

The same connection requirements as for cold water also apply to hot water (max. 70°C).

A suitable connection hose with a threaded union is provided with the machine.

The machine can be connected to a hot water supply of 70°C to max. 85°C. This requires the use of a separate heat-resistant inlet hose.

This additional hose must be obtained from Miele Spares. In addition, the appliance must be programmed accordingly by Miele Customer Service or an authorised agent.

Connection to hot water only is not possible for functional reasons.

In the event that hot water is not available on site, connection of the second hose must be made to a cold water supply.

Alternatively, the hot water connection should be blocked using the enclosed blind stopper and the machine controls set to cold water intake.

The required amount of hot water should be added to the cold water volume.

Dump valve

The washer-extractor is drained using a motorised drain valve. The machine can be connected directly to the on-site drainage system (without an odour trap) or via a floor drain (floor drain with odour trap).

A vented drainage system is vital for unimpeded drainage. If on-site venting is insufficient, a vent kit (Mat. no. 05239540) is available from Miele Spares or authorised dealers.

If several machines are connected to a single drain pipe, this should be sufficiently large to allow all machines to drain simultaneously.

Equipotential bonding

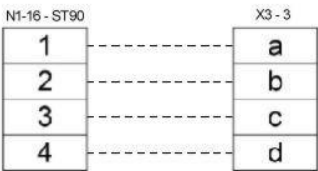
If necessary, equipotential bonding with good galvanic contact must be guaranteed in compliance with all applicable local and national installation specifications.

Connection material for equipotential bonding must be provided on site or using a kit available from Miele Spares.

Peak load/energy management

The machine can be connected to a peak-load or energy management system using an optional kit.

Three signals are issued by the machine via a terminal strip. The terminal strip is labelled a, b, c, and d.



a - Output signal, Start of machine operation
b - Output signal, Machine heating request

c - Peak-load input signal, Machine heating deactivated

d - Neutral conductor

When a peak-load signal is received, the heating is deactivated and the programme stopped. An appropriate message appears in the display.

The programme is resumed automatically when the peak-load system reactivates the heating.

Liquid dispensing connection

External liquid dispenser pumps with a 'container empty' indicator can be used to dispense liquid detergents.

Only liquid dispenser pumps with their own controls or programming facilities can be used.

It is particularly important to observe manufacturer's instructions when using a combination of detergents, additives and special-purpose products.

Serial interface

The serial interface is provided by an additional XKM RS323 module. Connected external machines must also be fused in accordance with SELV requirements. External connection units must also comply with SELV.

The plug-in module is provided with a connection cable and a D-Sub plug for connection.

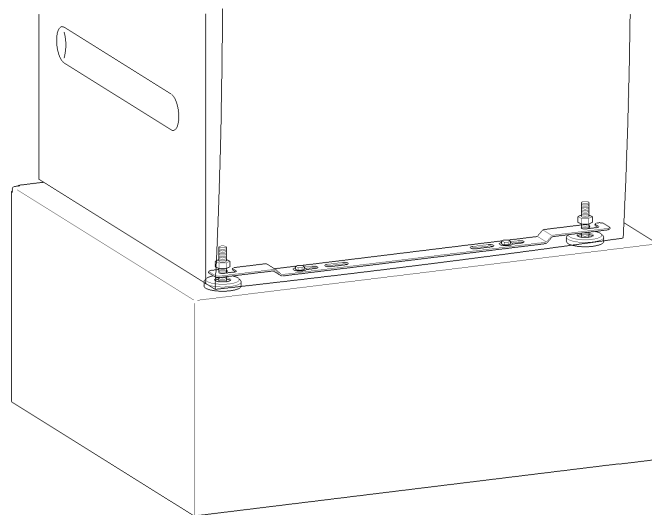
Installation and anchoring

The machine must be installed on a perfectly smooth, level and firm surface which is able to withstand the quoted loads.

The floor load created by the machine is concentrated and transferred to the installation footprint via the machine feet.

It is not absolutely necessary to bolt the machine to the floor.

The machine should be levelled in both directions with the aid of the adjustable feet.



The anchors provided can be used to bolt the machine to the floor by both front feet. The material provided is intended for use in bolting the machine to a concrete floor.

Bolts and fasteners for all other floor types must be provided on site.

Plinth installation

The machine can be installed on a machine plinth (open or box plinth, available as an optional Miele accessory) or on a concrete platform to be provided on site.

The quality of the concrete and its strength must be assessed according to the machine load. Ensure that any raised concrete plinth is adequately bonded to the concrete floor below!

If the machine is installed on a concrete or masonry plinth, it must be secured using the anchors supplied with the machine. Otherwise there is the danger of the machine moving and falling off the plinth during spinning.

Washer-dryer stack

A Miele tumble dryer can be stacked on top of this washer-extractor. A WTV stacking kit (optional accessory) is required for this.

Installation of the stacking kit must be performed by Miele Service or an authorised agent.