

Installation plan

Tumble dryer



PT 5137 WP
PT 7137 WP

To avoid the risk of accidents or damage to the machine, it is **essential** to read operating and installation instructions before installation and commissioning. This prevents both personal injury and damage to the machine.

en - GB

10 145 620 / 01

Legend:



Connection required



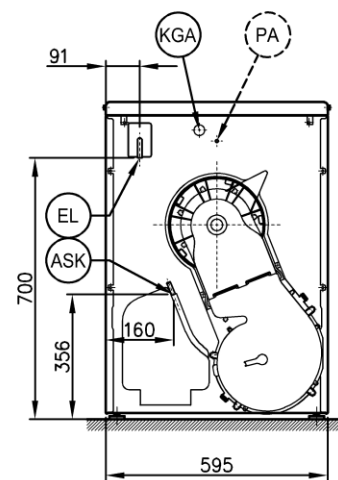
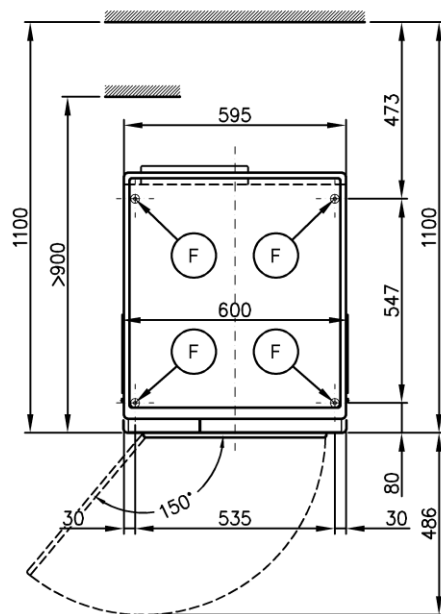
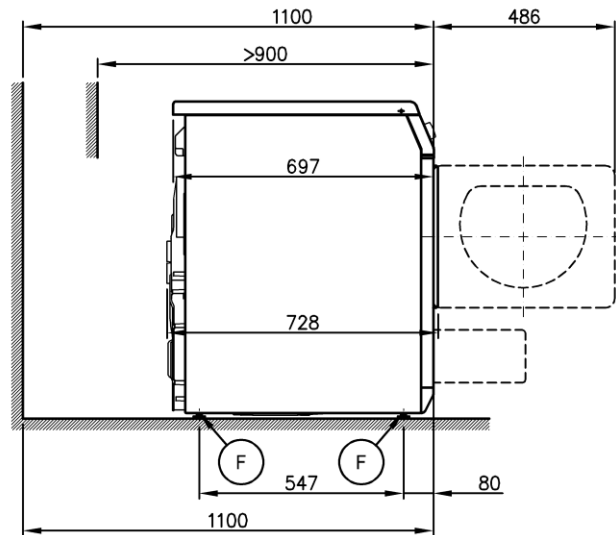
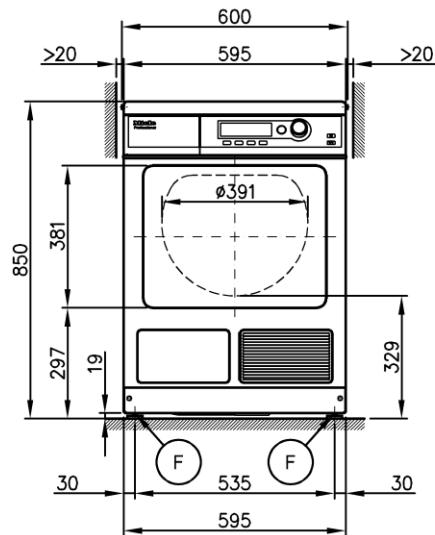
Connection optional or required,
depending on model

AL Vented
ASK Condensate drain hose
B Machine anchors
EL Electrical connection
F Machine feet, adjustable
KG Payment system
KGA Payment system connection
KLA Cooling air vent

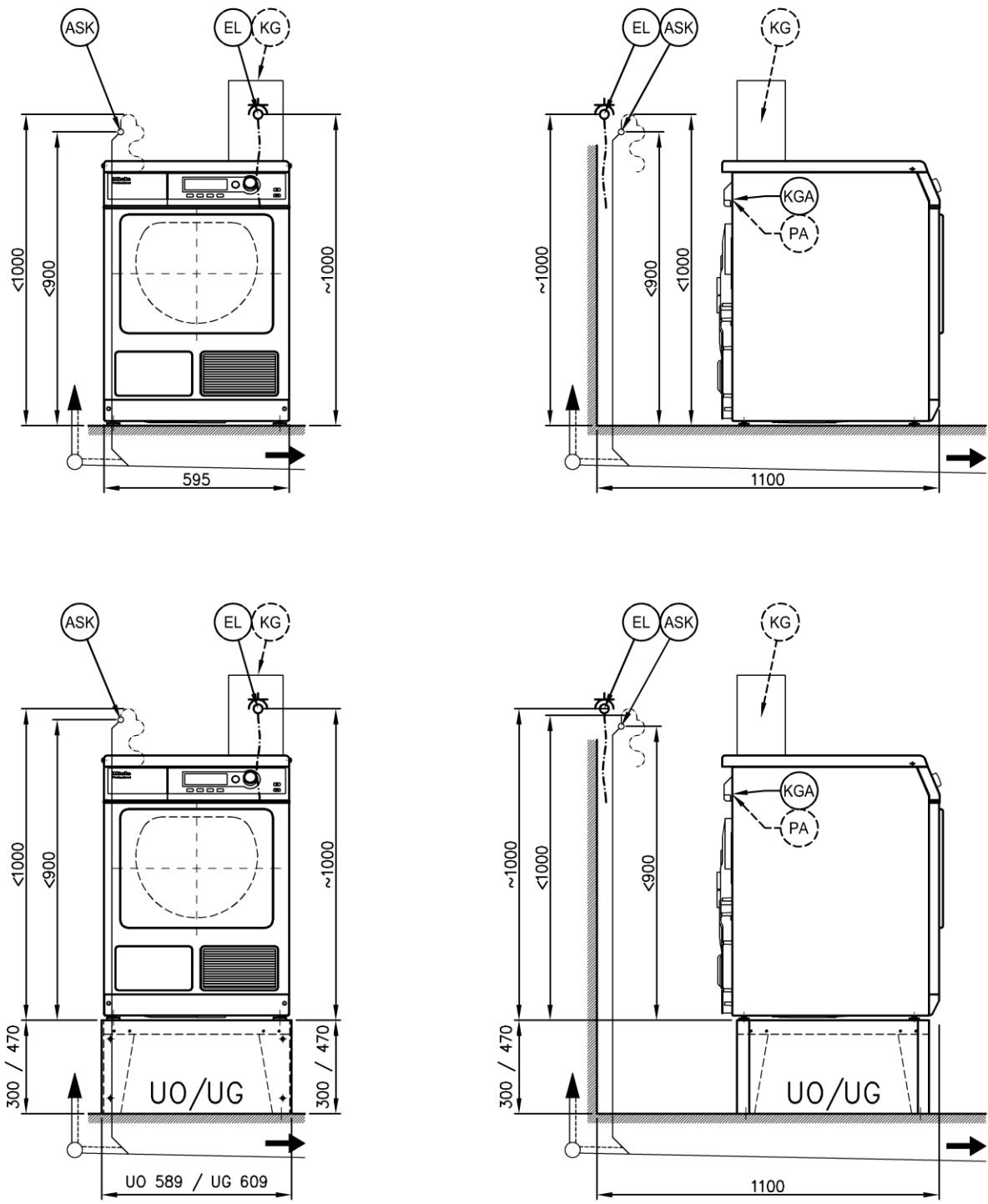
KLZ Cooling air
PA Equipotential bonding
SLA Peak-load connection
UG Box plinth
UO Open plinth
WTV Washer-dryer stacking kit
XKM Communication module
ZL Air intake

All rights reserved.

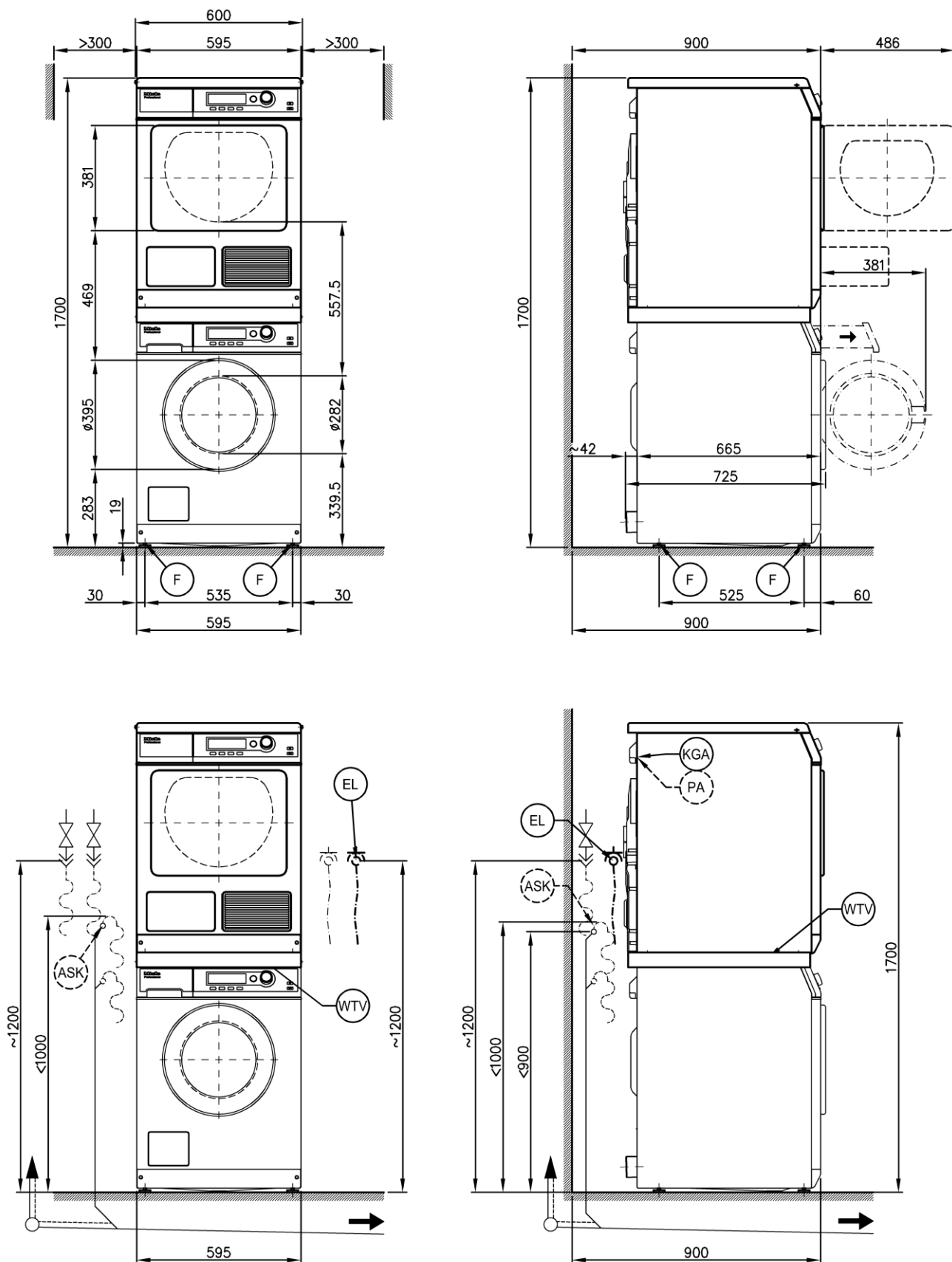
Machine dimensions



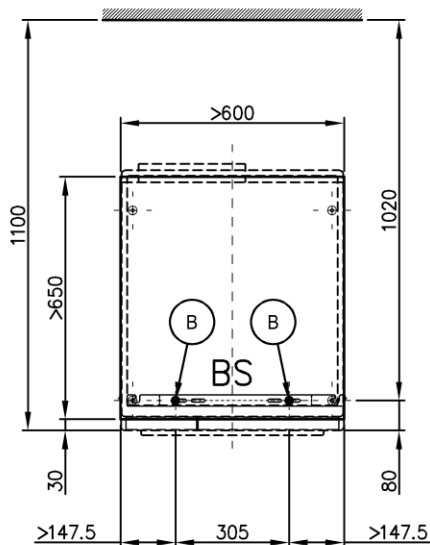
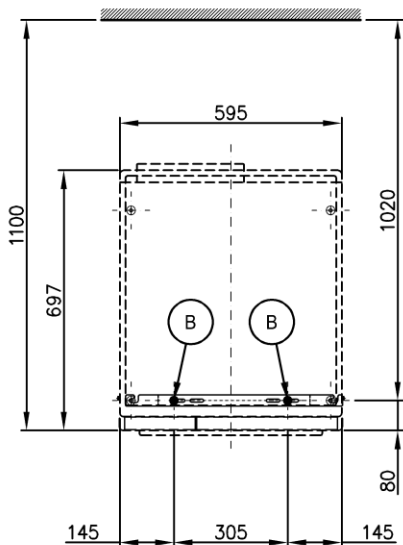
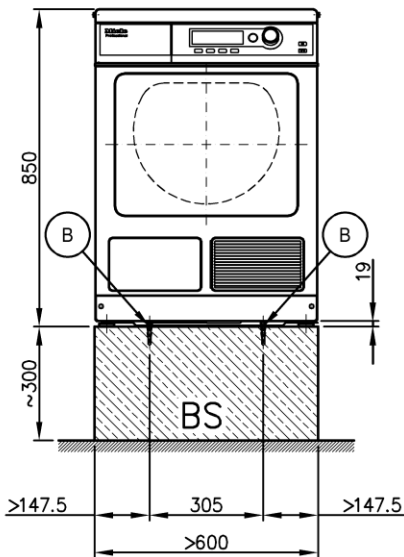
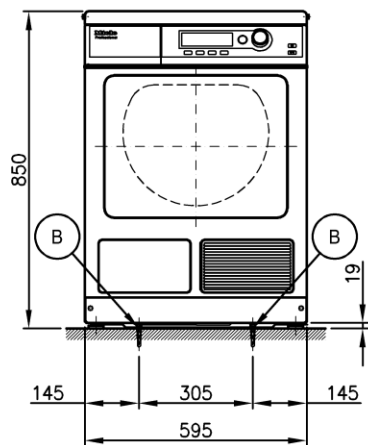
Installation



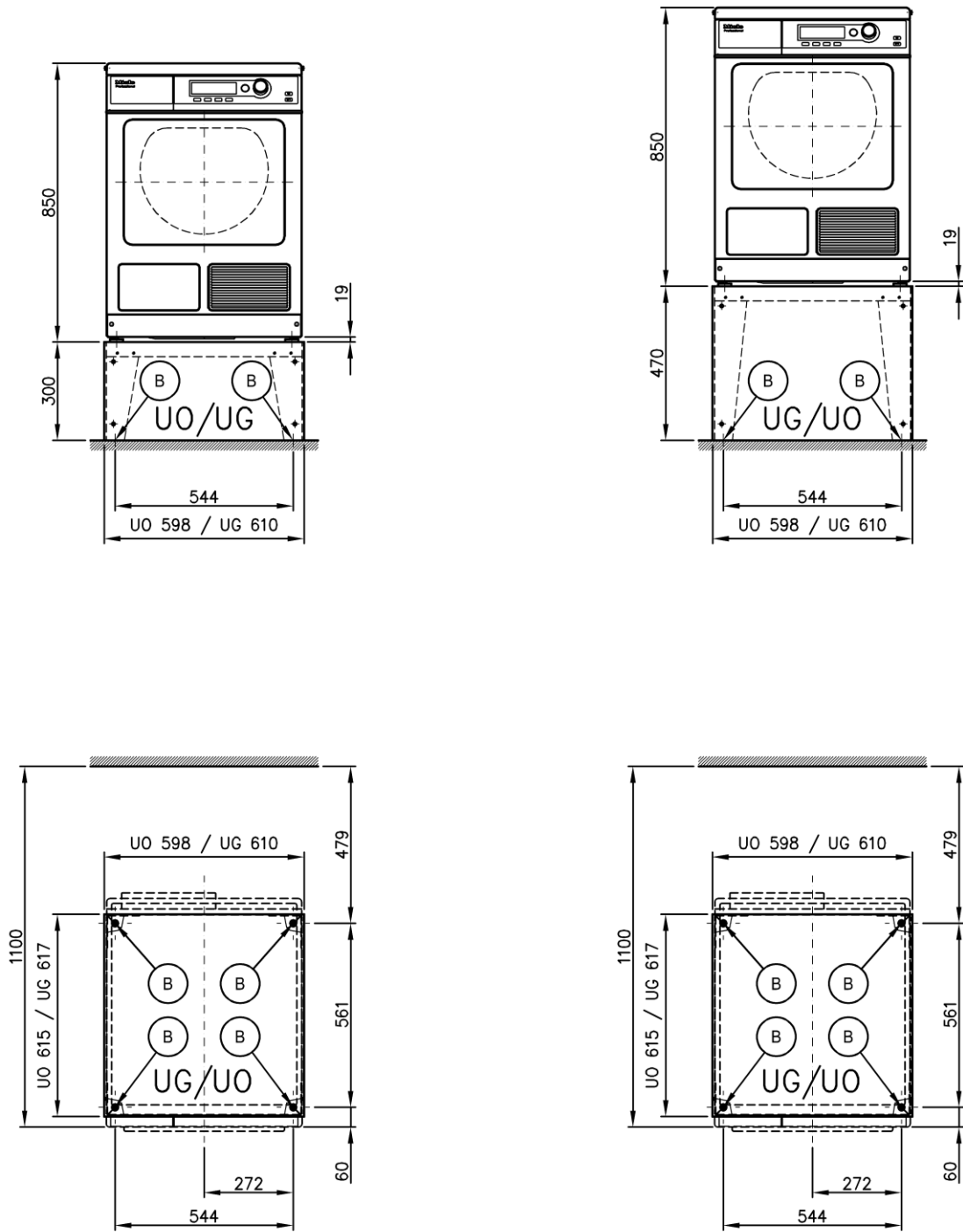
Installation



Installation



Installation



Technical data

		PT 5137 WP	PT 7137 WP
Drying system		Heat pump	Heat pump
Drum volume	l	130	130
Load capacity	kg	6.5	6.5
Door opening diameter	mm	391	391

Electrical connection (EL)

Standard voltage		1N AC 230V	1N AC 230V
Frequency	Hz	50	50
Total rated load	kW	1.25	1.25
Fuse rating (B trip rating according to EN 60898)	A	1 x 10	1 x 10
Supply lead min. cross-section	mm ²	3 x 1.5	3 x 1.5
Supply lead with plug		●	●
Length of supply lead	mm	2000	2000

Condensate drain hose (ASK)

Drainage temperature, max.	°C	70	70
Max. transient flow rate	l/min	3.6	3.6
On-site hose sleeve for drain hose (outer dia. x length)	mm	10 x 30	10 x 30
Drain hose (internal diameter)	mm	10 (DN10)	10 (DN10)
Drain hose length	mm	1400	1400
Drain pump head height from bottom edge of machine, max.	mm	1000	1000

Equipotential bonding (PA)

Machine connection (separate kit required)		O	O
--	--	---	---

Payment system connection (KGA)

Connection of payment systems		●	●
-------------------------------	--	---	---

Communication module (XKM)

RS 232 serial interface (XKM module retrofitting kit)		O	O
---	--	---	---

Installation on machine feet (F)

No. of machine feet	No.	4	4
Machine foot, height-adjustable with thread	mm	+14.5 / -7	+14.5 / -7
Machine foot diameter	mm	40	40

Anchoring (B)

Standard anchoring

Floor anchor kit (for 2 machine feet)		●	●
Wood screws according to DIN 571	mm	6 x 50	6 x 50
Rawl plugs (diameter x length)	mm	8 x 40	8 x 40

Anchoring of Miele plinths

Miele plinth installation (fasteners included)		O	O
Required anchor points	No.	4	4
Wood screws according to DIN 571	mm	8 x 65	8 x 65
Rawl plugs (diameter x length)	mm	12 x 60	12 x 60

Plinth floor anchoring (to be provided on site)

Machine installation on permanent plinth (concrete or masonry)		O	O
Plinth installation footprint (W/D)	mm	600/650	600/650
Wood screws according to DIN 571	mm	6 x 50	6 x 50
Rawl plugs (diameter x length)	mm	8 x 40	8 x 40

● = standard, O = optional, + = only on request, - not available

Technical data

		PT 5137 WP	PT 7137 WP
Machine data			
Overall machine dimensions (H/W/D)	mm	850/600/728	850/600/728
Casing dimensions (H/W/D)	mm	850/595/697	850/595/697
Site-access dimensions (H/W)			
Min. site-access (excl. packaging)	mm	900/600	900/600
Installation dimensions			
Min. side gap	mm	20	20
Recommended side gap - washer-dryer stack	mm	300	300
Recommended min. distance to opposite wall from machine front	mm	900	900
Recommended distance to opposite wall from front of machine	mm	1100	1100
Weights and floor loads			
Machine weight (net weight)	kg	79.5	79.5
Max. floor load in operation	N	925	925
Emissions			
Sound pressure level in accordance with EN ISO 11204/11203	dB(A)	<70	<70
Heat dissipation rate to installation site	W	917	917

Options / Accessories

	Features
Box plinth (UG)	
Box plinth, H 300 mm (UG 5005)	Galvanised plinth, stainless-steel sides
Box plinth, H 470 mm (UG 5005-47)	Galvanised plinth, octoblué stove-finished side panels
Box plinth, H 750 mm (UG 5005-75)	Galvanised plinth, octoblué stove-finished side panels
Open plinth (UO)	
Open plinth, H 300 mm (UO 5005)	Galvanised plinth, octoblué stove finish
Open plinth, H 470 mm (UO 5005-47)	Galvanised plinth, octoblué stove finish
Washer-dryer stacking kit (WTV)	
Stainless-steel kit (WTV 5062)	Washer-dryer stacking kit
Lotus white kit (WTV 5061)	Washer-dryer stacking kit
Payment systems (KG)	
Single unit (C 4060)	Payment system with tokens (programme operation only)
Single unit (C 4065)	Payment system for tokens and euro coins, time and programme operation
Single unit (C 4070)	Payment system for tokens and euro coins, time and programme operation
Multi-machine unit (C 5200 BT)	Base unit for GeldKarte transactions (for max. 8 machines)
ABT 5220 remote bundle	Machine monitoring with Bluetooth communication (one each per machine)
Accessories	
Equipotential bonding kit	The conversion kit is available from Spares
Communication module XKM (XKM RS 232-10)	Retrofitting kit XKM module with RS 232

Installation and planning notes

Installation requirements

Electrical connection should only be made to a power supply provided in accordance with all appropriate local and national legislation and regulations.

In addition, all regulations issued by the appropriate utilities as well as standards relating to occupational safety, and all applicable valid regulations and technical standards must be observed!

General operating conditions

Ambient temperature in installation room: +2°C to +35°C.

Air drawn in for use in the drying process will be warm when it is expelled back into the room. It is therefore very important to ensure the room is adequately ventilated, particularly if the dryer is located in a small room. Air drawn in for use in the drying process will be warm when it is expelled back into the room. It is therefore very important to ensure the room is adequately ventilated, particularly if the dryer is located in a small room.

Make sure that the room temperature is not too high. If there are other heat producing appliances in the room in which the dryer is located, make sure the room is well ventilated and switch the other appliances off, if possible.

Otherwise running times and energy consumption could be increased.

Electrical connection

This machine is fitted with a supply lead and a plug for plug-and-play operation.

The washer may only be connected to an electrical system that conforms to the national and local codes and regulations.

The tumble dryer should never be connected by an extension cable, e.g. power strips, to avoid the risk of fires.

The appliance data plate indicates the nominal power consumption and the appropriate fuse capacity. Compare the specifications on the data plate with those of the electrical power supply.

If the machine is hard wired, a dual circuit breaker must be provided on-site. When switched off there must be an all-pole contact gap of 3 mm in the isolator switch (including switch, fuses and relays according to IEC/EN 60947).

The plug connectors or isolator switch should be easily accessible for servicing work. If the machine is disconnected from the electricity supply ensure adequate measures are taken to ensure that the machine cannot be reconnected to the electricity supply until all work has been carried out.

New connections, modifications to the system or servicing of the ground conductor, including determining the correct fuse amperage, must be carried out by a qualified electrician, as they are familiar with the pertinent regulations and the specific requirements of the electric utility company.

References to cable cross-sections in the technical data refer only to the required supply lead. Please consult relevant local and national regulations when calculating any other wire gauges.

Condensate drain hose

The condensed water is pumped away through the drain hose which is located at the back of the dryer.

The machine drains through a pump with a 1 m delivery head. For the water to drain freely, the hose must be free of kinks. The swivel elbow at the end of the hose can be turned in either direction, or removed as needed with a sharp twist and pull.

In certain situations this tumble dryer must be fitted with a non-return valve (optional accessory). See "Drain hose connection". There is a risk of back-flow into the dryer if a non-return valve is not fitted.

Drain hose connection:

- Direct connection to a plastic drain pipe with a rubber sleeve.**
There is no need for a U-pipe. Use a non-return valve if the end of the hose could possibly become submerged in water.
- Connected to a sink using a plastic nipple.** Always use a non-return valve.

- Connected securely to a floor drain.**
Always use a non-return valve.
- Direct into a sink or basin** If you want to drain the water off into a sink or basin
The hose should be secured carefully, e.g. by tying it to a tap, to make sure it cannot slip during use.
Use a non-return valve if the end of the hose could possibly become submerged in water.

Equipotential bonding

If necessary, equipotential bonding with good galvanic contact must be guaranteed in compliance with all applicable local and national installation specifications.

Connection material for equipotential bonding must be provided on site.

Payment system

This machine can be fitted with a single-machine payment system (optional accessory). The necessary programming should only be performed by a qualified agent or by Miele Service.

Serial interface

Depending on the model, a serial interface is either pre-fitted or can be retrofitted on request.

The serial interface is provided by an additional plug-in XKM RS323 module. The module can only be used on Miele Professional machines with a communication slot.

Connected external machines must also be fused in accordance with SELV requirements. External connection units must also comply with SELV.

The plug-in module is provided with a connection cable and a D-Sub plug for connection.

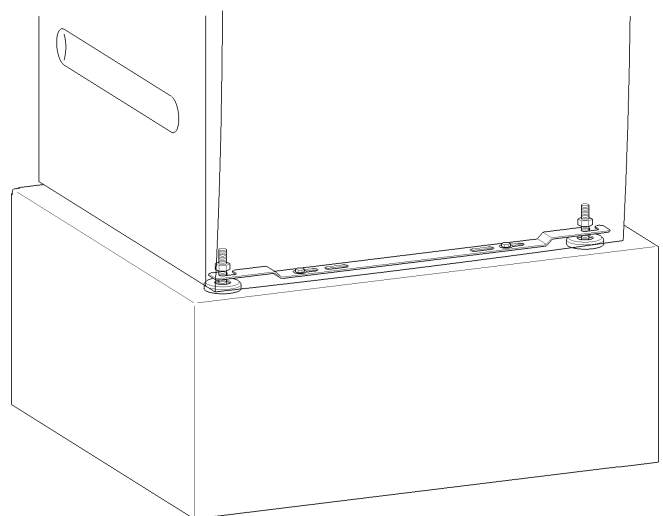
Installation and anchoring

The machine must be installed on a perfectly smooth, level and firm surface which is able to withstand the quoted loads.

The floor load created by the machine is concentrated and transferred to the installation footprint via the machine feet.

It is not absolutely necessary to bolt the machine to the floor.

The machine should be levelled in both directions with the aid of the adjustable feet.



The anchors provided can be used to bolt the machine to the floor by both front feet. The material provided is intended for use in bolting the machine to a concrete floor.

Bolts and fasteners for all other floor types must be provided on site.

Plinth installation

The machine can be installed on a machine plinth (open or box plinth, available as an optional Miele accessory) or on a concrete platform to be provided on site.

The quality of the concrete and its strength must be assessed according to the machine load. Ensure that any raised concrete plinth is adequately bonded to the concrete floor below!

If the machine is installed on a concrete or masonry plinth, it must be secured using the anchors supplied with the machine. Otherwise there

is the danger of the machine moving and falling off the plinth during spinning.

Washer-dryer stack

A Miele tumble dryer can be stacked on top of the washer-extractor. A WTV stacking kit (optional accessory) is required for this.

Installation of the stacking kit must be performed by Miele Service or an authorised agent.