

The new LITTLE GIANTS  
Washing machines, tumble dryers, rotary ironers



COMPLIANT  
WITH MACHINERY  
GUIDELINE  
2006/42/EG



# The new LITTLE GIANTS

## Washing machines and tumble dryers

### Forever better

Miele is the epitome of quality. For 110 years, Miele has subscribed to a corporate philosophy of being 'forever better': A quality promise that stands for perfect systematic solutions in laundry care. All Miele products are developed and manufactured to meet the highest of quality standards. The new washing machines and tumble dryers make consistent use of innovative technology and clearly underline Miele's role as technology leader. Miele laundry machines offer considerable user benefits with respect to economic operation and reliability. All features strictly comply with the requirements of commercial laundry care. Each machine undergoes extensive visual, functional and safety tests before it leaves the factory gates. Dependable componentry and technology reflects Miele's superior quality and technological prowess.

### Exceptional performance

With a throughput capacity of up to 8 kg of cottons per hour, the new LITTLE GIANTS represent the professional approach to a wide range of laundry-care applications. With new and innovative features, a rugged industrial design and user-specific care programmes, these machines are the ideal helpers in coping with huge amounts of laundry each and every day. And the unique Miele honeycomb drum with its sculptured design guarantees maximum laundry care. WashPlus and DryPlus stand for innovative product features, a responsible approach to natural resources, ergonomic processes and the dependability which comes from a strong brand.

### Safe according to Machinery Guideline

The new Machinery Guideline (2006/42/EG) defines comprehensive safety regulations for commercial machines. The aim is to take the greater risk potential of commercial machines into account and in particular to ensure that operating personnel are properly protected during their daily work. All new LITTLE GIANTS comply in full with the requirements of this new guideline.

COMPLIANT  
WITH MACHINERY  
GUIDELINE  
2006/42/EG



# WashPlus DryPlus

## +volumeplus

### A capacity that defines its size.

- Large drum volume for up to 6.5 kg of laundry
- Uniform washing and drying results
- Fast drying

## +careplus

### A system that provides gentle laundry care.

- Patented honeycomb drum
- Stability of shape and longer life cycle of textiles
- Dryer drum with SoftLift ribs
- Less creasing, less need for finishing
- Reduced investment in new textiles

## +powerplus

### A performance that offers more.

- Powerful heater elements for fast heat-up and short cycles
- Large drum volume for high laundry throughput
- Intelligent solutions for reliable results
- Professional, commercial technology

## +ecoplus

### A sustainable, cost effective performance.

- Optimum use of energy
- Optimum use of water
- Robust design using recyclable materials for maximum sustainability
- Low consumption

## +flexplus

### A process that adapts to all situations.

- User interfaces to meet individual consumer needs
- Special version for coin-op launderettes
- Modifiable programme parameters
- Display in local language
- Large number of special and additional programmes

## +comfortplus

### A simple, user friendly solution.

- Simple and fast programme selection using rotary switch and pushbuttons
- Programme sequence indicator in display
- Large drum opening for simple loading and unloading

## +formplus

### A concept that leaves a lasting impression.

- Product design for perfect ergonomics, user convenience and quality
- Versions in Lotus White and stainless steel

## +brandplus

### A strong brand.

- High self-build content on all products
- Wide range of services including pre-sales advice, planning, training, economic feasibility studies, financing through to after-sales service

# The new LITTLE GIANTS

## Professional quality for professional businesses



Photo shows PW 6065 Vario washing machine from PROFESSIONAL range



### powerplus

A performance that offers more.

#### Robust design

Reinforced shock absorbers, extremely quiet running properties thanks to a robust drum bearing and choice materials ensure a durable, long-lasting machine built to cope with the rough and tumble of commercial applications.

#### Short programmes

A hot water connection and a high heater rating allows short programme cycles, faster laundry turnaround and high daily throughput. Fresh laundry is washed, dried and available for use again in only 90 minutes.



#### Heavy-duty motor

A very powerful asynchronous motor with a frequency converter allows excellent speed control enabling a gentle run-up at low speeds, smooth running at high speeds and excellent durability.

#### Professional Balance System

A dependable imbalance monitoring system ensures that the laundry load is evenly distributed around the drum and guarantees reliable spin performance. At the same time, by reducing imbalances, the strain on the bearings is minimised, sound emissions reduced and laundry prepared for the drying cycle in the best possible way.

#### Individual installation options

Miele tumble dryers are available as vented or condenser dryers. On the condenser dryer, condensate is drained off via a hose attached to the rear of the unit.

Using a stacking kit, the washing machine and tumble dryer can be installed one on top of the other on a footprint of only 60 x 70 cm.

#### Commercial machines to meet professional needs

Thanks to innovative and rugged commercial-grade technology and care programmes catering for specific user needs, Miele's LITTLE GIANTS clearly outperform domestic machines. In order to meet professional requirements, these commercial washing machines and tumble dryers have features specifically designed for small businesses. Furthermore, LITTLE GIANTS meet all requirements pursuant to the European Machinery Guideline.

# The new LITTLE GIANTS

## Power-packed for top-level performance



### **PROFESSIONAL series**

The focus in the PROFESSIONAL series is on the range of users and laundry-care applications. Whether coin-op laundrette, camp-site laundry or hotel or restaurant: An extremely simple user interface is required on machines used by casual users or where staff fluctuates. Here, the user can select from up to 21 pre-defined languages. The PROFESSIONAL range caters for the needs of the following target groups:

- Launderettes
- Camp-sites
- Fitness centres
- Hotels and restaurants
- Housing associations
- Student accommodation
- Doctors' surgeries and hospitals
- Care and nursing homes
- Dry cleaners
- Commercial laundries
- Hairdressers and beauty salons
- Nurseries

Offering a large selection of special and add-on programmes, the PROFESSIONAL series meets the most demanding requirements in commercial laundry care. Fixed wash temperatures and spin speeds are assigned to each programme but can be modified within reason.

The special hygiene programmes on models from the PROFESSIONAL range meet the disinfection requirements in critical areas such as clinics, surgeries and nursing homes. The individual adjustment of wash parameters and the option of connecting to liquid dispensing systems caters for applications at dry cleaners, commercial laundries and bedding stores. Existing interfaces allow the connection of payment systems or central controls in coin-op laundrettes.

As standard units or as secondary machines to complement Miele's larger washer-extractors and tumble dryers, Miele's PROFESSIONAL series is ideal for processing smaller batches, loads requiring special treatment or even individual textiles requiring special processing.

### **Healthcare applications**

Dump valve drain versions feature two sluice and thermal disinfection programmes meeting Department of Health guidelines HSG (95) 18, and conform to the requirements of The Care Standard Act 2000.



# The new LITTLE GIANTS PROFESSIONAL range



## **PW 6065 Vario washer-extractor**

- Load capacity 6.5 kg
- PROFITRONIC L Vario controls
- Honeycomb drum, drum volume 59 l
- Spin speed 1400 rpm
- Direct-access keys
- g factor 526, Residual moisture 49%

## **PW 6055 Vario washer-extractor**

As per PW 6065 with following exceptions

- Load capacity 5.5 kg
- Honeycomb drum, drum volume 54 l



## **PT 7135 C Vario tumble dryer**

- Condenser dryer
- Load capacity 6.5 kg
- PROFITRONIC L Vario controls
- Honeycomb drum, drum volume 130 l



## **PT 7136 Vario tumble dryer**

- Vented dryer
- Load capacity 6.5 kg
- PROFITRONIC L Vario controls
- Honeycomb drum, drum volume 130 l

### **External casing options:**

- Front and side panels white, lid with stainless steel, fascia zermatt silver, or
- Front, side panels and fascia in stainless steel, lid with stainless steel

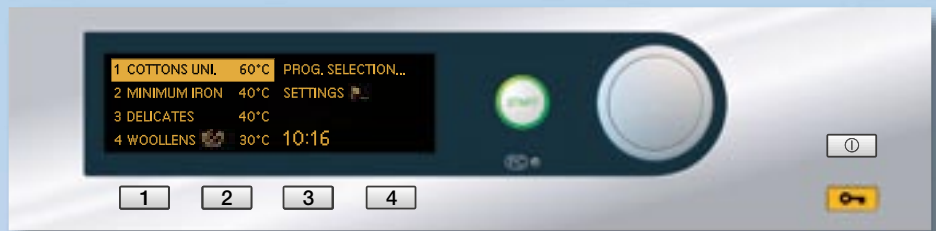
Exclusive to  
**MIELE**

- Powerful: Washing and drying of 6.5 kg of laundry in only 90 mins.\*
- Patented: Honeycomb drum for extremely gentle laundry care
- Individual: 3 user interfaces for flexible use
- Versatile: Selection of 21 languages
- Maintenance-free: Unimpeded drainage thanks to streamlined dump valve (PW 6065)
- Convenient: AutoClean detergent dispenser for residue-free dispensing
- Flexible: Connection of 6 dispenser pumps for simple dispensing (PW 6065)
- Economical: Flowmeter for precise monitoring of water intake
- Standard features: User-specific additional programmes
- Time-saving: Large-capacity filter for up to 16 drying cycles (PT 7136)
- Communicative: Diagnosis, service and documentation interfaces
- Adjustable: Interface for payment systems

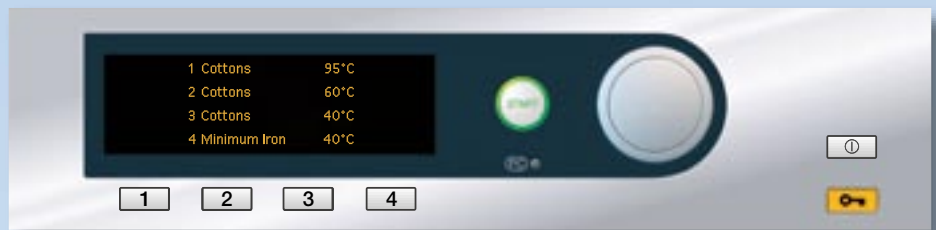
\* Cottons 60°C, hot water fill (70°C) / Normal dry

# PROFESSIONAL range

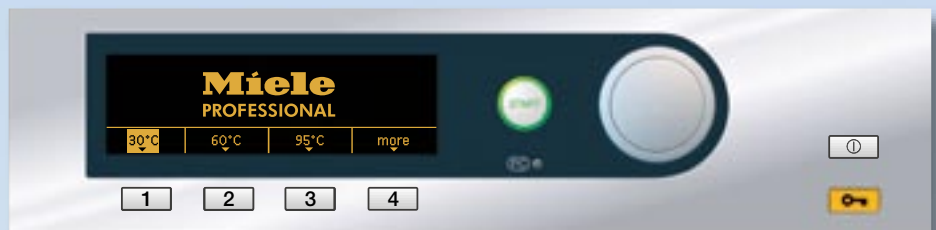
## Washing machine control versions



User interface: Standard



User interface: Direct-access buttons



User interface: Direct-access buttons and more

## flexplus

A process that adapts to all situations.

New from  
**MIELE**

### PROFITRONIC L Vario

#### Individual display design

PROFITRONIC L VARIO controls facilitate 3 programme selection concepts on both washing machines and tumble dryers, allowing machines to adapt flexibly to commercial user's needs.

#### User interface: Standard

In 'Standard' mode, the user has access to all programmes from the selected target-group programme packages. Four programmes can be saved to the direct-access keys for quick selection. Other programmes can be accessed by selecting 'Further programmes'. The option of modifying programmes and programme parameters, e.g. temperatures, spin speeds, pre-wash, etc., to suit individual needs makes this control set particularly flexible.

#### User interface: Direct-access buttons

This user interface offers extremely simple operation by allowing the user to select 4 programmes and save them to 4 pushbuttons. No further changes are possible on the part of the user.

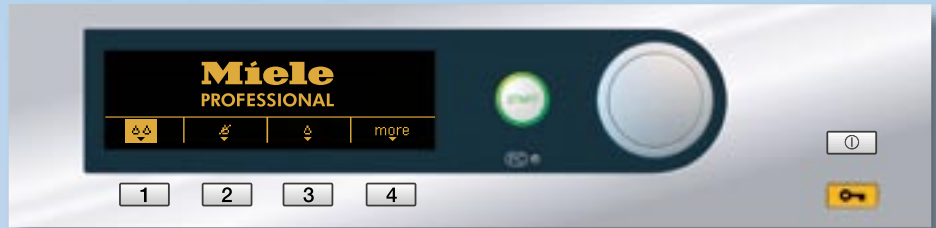
The operator can, of course, reassign new programmes to pushbuttons at any time. This approach offers maximum safety and eliminates human error.

#### User interface: Direct-access buttons and more

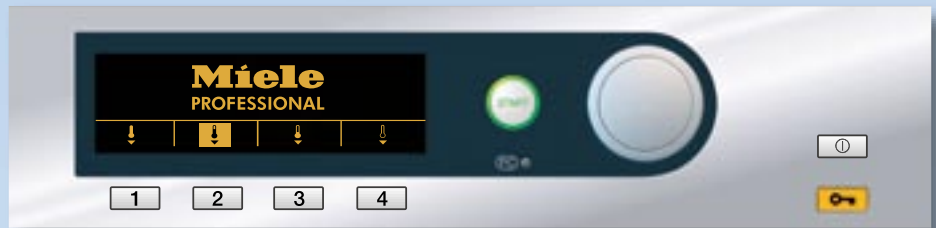
In this mode, the laundry operator selects 12 programmes to be made available to users. The first 3 are visible in the display and can be selected using direct-access buttons 1-3. The fourth button calls up a list containing 9 further programmes. This type of interface ideally combines safe and simple selection with access to a broader range of programmes.

# PROFITRONIC L VARIO controls

## Tumble dryer control versions



User interface: Direct-access pushbuttons/Residual moisture



User interface: Direct-access pushbuttons/Time

### User interface: Direct-access pushbuttons/Residual moisture

As on the washing machine, the main programmes are assigned to buttons 1–3 by the operator. Button 4 is used to call up further programmes.

Residual moisture levels are shown in the display using droplets.

### User interface: Direct-access pushbuttons/Time

In this mode, the user can select from 4 temperature settings. The required time is selected using the rotary selector switch. This set of controls is suitable for use in combination with external payment systems. In this case, times are selected via the payment system.

# The new LITTLE GIANTS

## Gentle laundry care

### +volumeplus

**A capacity that defines its size.**

LITTLE GIANT washing machines and tumble dryers may be compact but nevertheless offer a large drum volume with a capacity for up to 6.5 kg of laundry.

### +careplus

**A system that provides gentle laundry care.**

Only Miele laundry machines can offer the gentle fabric care afforded by the patented honeycomb drum.

The honeycomb pattern on the washing machine drum creates a protective film of water on which clothing gently glides. The small perforations prevent damage to fabrics and do not leave dimples on the laundry load after spinning. On the dryer, traction is increased and laundry travels further thanks to the rounded, patented SoftLift ribs. This increases exposure of the laundry load to the warm air and cushions laundry gently as it tumbles.

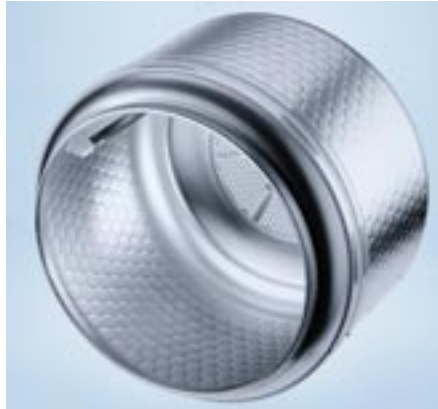


Exclusive to  
**MIELE**

#### **Unique gentle fabric care**

Gentle treatment of fabrics in Miele's patented honeycomb drum has been endorsed by scientific evidence provided by the Institute for Applied Research in Krefeld, Germany.

- Textiles washed much gentler
- Stability of shape and longer life cycle through gentle treatment

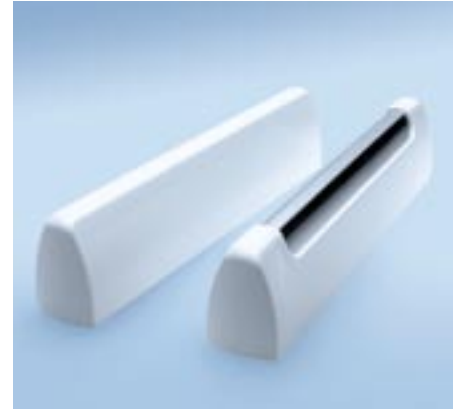


Exclusive to  
**MIELE**

#### **Perfect finish**

As on the washing machine, the honeycomb drum ensures gentle laundry care and an excellent finish in the tumble dryer.

- Optimum evaporation of moisture for even drying results
- Laundry cushioned as it tumbles for smoother finish



New from  
**MIELE**

#### **PerfectDry**

PerfectDry – Miele's patented residual moisture sensing system uses sensors to precisely measure and monitor drying progress.

The new SoftLift ribs with their rounded edges and perfectly fitting electrodes gently transport laundry.





# Commercial specifications for professional solutions

## +ecoplus

**A sustainable, cost effective performance.**

LITTLE GIANTS excel across the board with their economic use of electricity and have a reputation for maximum efficiency and performance.

Miele's motto in product development has always been to achieve optimum results using as little water, energy and detergent as necessary.

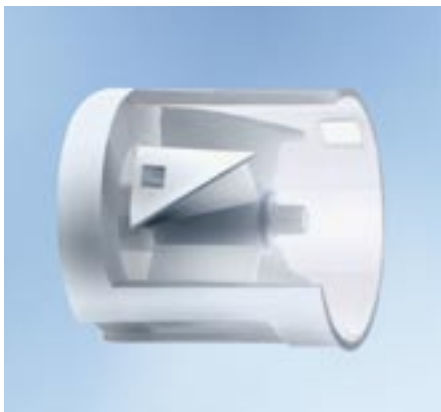


Dispenser module

New from  
**MIELE**

### Liquid dispensing

Up to 6 dispenser pumps can be controlled and 'container empty' signals processed. On the PW 6065, a special and patented module dispenses liquid products directly into the dispenser. This is done via separate tubing so that products do not come into contact with each other and cannot react.



New from  
**MIELE**

### Flowmeter

The flowmeter allows water intake to be monitored and controlled with great precision. In combination with the integrated pressure sensor, this helps reduce water consumption by up to 10%.



New from  
**MIELE**

### AutoClean dispenser

Thanks to a specially coated surface and powerful jets of water, detergent is flushed out of both the main wash and pre-wash compartments without leaving any residue. As a result, the AutoClean dispenser always remains perfectly clean.



New from  
**MIELE**

### Barrier-free drainage

For textiles with a tendency to shed hairs: As an alternative to the drain pump, Miele now offers a newly developed dump valve for gravity drainage. An optimised actuator and an increased diameter prevents clogging and deposits even in the face of coarse soiling.

# Technical data

## Washing machines

<b>Washing machines</b>	<b>PW 6055 Vario</b>		<b>PW 6065 Vario</b>	
Series	PROFESSIONAL		PROFESSIONAL	
<b>Performance data</b>				
Load capacity [kg]	5.5		6.5	
Honeycomb drum, drum volume [l]	54		59	
Spin speed [max. rpm]	1400		1400	
g factor	526		526	
Residual moisture [%]	49		49	
<b>Controls</b>				
PROFITRONIC L Vario	•		•	
21 languages	•		•	
24 h delay start	•		•	
LED, Class 1	•		•	
<b>Water connections</b>				
1 x cold water, ½" with ¾" threaded union	•		•	
1 x hot water, ½" with ¾" threaded union	•		•	
Min. water flow pressure	100 kPa (1 bar)		100 kPa (1 bar)	
Max. water flow pressure	1000 kPa (10 bar)		1000 kPa (10 bar)	
Drain pump (LP) or dump valve (AV)	DN 22/DN 70		DN 22/DN 70	
<b>Electrical connection</b>				
Asynchronous motor with frequency converter	•		•	
2N AC 400 V 50 Hz – with cable	•		•	
Heater rating [kW]	5.3		5.3	
Total connected load [kW]	5.5		5.5	
Fuse rating [A]	2 x 13		2 x 13	
1N AC 230 V 50 Hz – with cable and plug	•		–	
Heater rating [kW]	2.65		–	
Total connected load [kW]	2.85		–	
Fuse rating [A]	1 x 13		–	
1N AC 230 V 50 Hz – with cable	•		•	
Heater rating [kW]	4.85–5.8		4.85–5.8	
Total connected load [kW]	5.05–6.0		5.05–6.0	
Fuse rating [A]	1 x 30		1 x 30	
<b>Dispenser systems</b>				
3-compartment front dispenser	•		•	
<b>Connection options</b>				
Dispenser for up to 6 liquid detergents	o (conversion kit)		•	
Payment system	•		•	
Serial interface RS 232	o (conversion kit)		o (conversion kit)	
<b>Dimensions, weight</b>				
External dimensions H/W/D [mm]	850/595/725		850/595/725	
Weight [kg]	107		109	
Installation as washer-dryer stack possible	•		•	
<b>External casing options</b>				
Front and side panels white, fascia in stainless steel, stainless steel lid	•		•	
Front and side panels and fascia in stainless steel, stainless steel lid	–		•	
<b>Sound emissions and floor load</b>				
Workplace sound emissions (sound pressure) according to EN ISO 11204/11203	70dB re 20µ Pa		70dB re 20µ Pa	
Max. floor load	2100 N (approx. 210 kg)		2100 N (approx. 210 kg)	
<b>Washing machine</b>				
<b>Programme duration (dump valve version)</b>	<b>CW<sup>1</sup></b> <b>HW<sup>2</sup></b>		<b>CW<sup>1</sup></b> <b>HW<sup>2</sup></b>	
Cottons 60°C [mins.]	– –		59 49	
<b>Programme duration (version with drain pump)</b>				
Cottons 60°C [mins.]	59 49		59 49	

• = Standard, o = Optional, – = Not available

<sup>1</sup> CW = Cold water 15°C, <sup>2</sup> HW = Hot water 70°C, Data in compliance with EN 60 456

# Technical data

## Tumble dryers

<b>Tumble dryers</b>	<b>PT 7135 C Vario</b>	<b>PT 7136 Vario</b>
Series	PROFESSIONAL	PROFESSIONAL
<b>Design</b>		
Vented drying system	–	•
Condenser dryer	•	–
<b>Performance data</b>		
Load capacity [kg]	6.5	6.5
Honeycomb drum, drum volume [l]	130	130
<b>Controls</b>		
NOVOTRONIC L	–	–
PROFITRONIC L Vario	•	•
21 languages	•	•
<b>Electrical connection</b>		
3N AC 400 V 50 Hz with cable	–	•
Heater rating [kW]	–	5.22
Total connected load [kW]	–	5.62
Fuse rating [A]	–	3 x 13
1N AC 220-240 V 50 Hz with cable and plug	•	•
Heater rating [kW]	2.75	2.75
Total connected load [kW]	2.95	2.95
Fuse rating [A]	1 x 13	1 x 13
1N AC 220-240 V 50 Hz with cable	–	•
Heater rating [kW]	–	5.22
Total connected load [kW]	–	5.62
Fuse rating [A]	–	1 x 25
<b>Connection options</b>		
Payment system	•	•
Serial interface RS 232	o (conversion kit)	o (conversion kit)
<b>Dimensions, weight</b>		
External dimensions H/W/D [mm]	850/595/700	850/595/700
Weight [kg]	60.5	57.5
Installation as washer-dryer stack possible	•	•
<b>External casing options</b>		
Front and side panels white, fascia in stainless steel, stainless steel lid	•	•
Front and side panels and fascia in stainless steel, stainless steel lid	•	•
<b>Sound emissions and floor load</b>		
Workplace sound emissions (sound pressure) according to EN ISO 11204/11203	< 70dB re 20µ Pa	< 70dB re 20µ Pa
Max. floor load	735 N (approx. 73.5 kg)	705 N (approx. 70.5 kg)

• = Standard, o = Optional, – = Not available

# Accessories

## Payment systems and plinths



### C 4060 single-machine coin mechanism

- Mechanical coin-acceptor unit for tokens (2/8/9)
- Programme operation
- H 258, W 175, D 155 mm



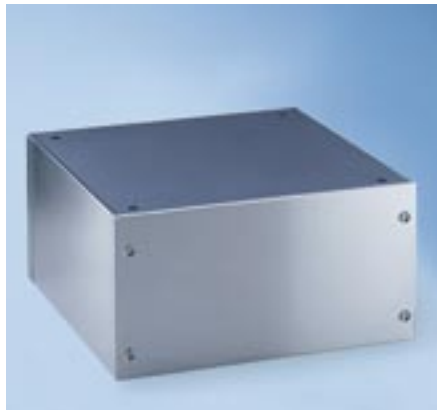
### C 4065 single-machine coin mechanism

- Mechanical coin-acceptor unit for 20p pieces or one pound coin
- Programme or timed operation
- H 258, W 175, D 155 mm



### UO 5005

- Open plinth
- Height 30 cm
- Galvanised, Octoblu<sup>\*</sup>
- Suitable for all LITTLE GIANTS



### UG 5005

- Box plinth
- Height 30 cm
- Stainless-steel panelling
- Suitable for all LITTLE GIANTS

<sup>\*</sup>stove-finished

# Smooth, crease-free finish



## **Optimum laundry finish**

Miele rotary ironers are just the job for a perfect finish on workwear and table linen: simple, fast and economical.

In hotels and restaurants, perfectly laundered textiles help keep up appearances.

Alongside guaranteeing a perfect finish, rotary ironers are above all simple and safe to use. Roller speed is infinitely selected using a rotary selector. Roller rotation can be stopped at any time by pressing the footswitch. The ARAMID cloth and the aluminium trough ensure efficient results.

The patented automatic finger guard stops the roller in its tracks and retracts the heater plate in the event that anything enters the gap between the roller and the trough. During power failures, the heater plate can be released easily to remove trapped items.

# FinishPlus

# Flatwork ironers

## HM 16-80, HM 16-83



### HM 16-80 rotary ironer

- Roller diameter 160 mm, Roller width 830 mm
- Throughput at 20% residual moisture max. 13 kg/h
- Steam function
- Fold-away unit
- ARAMID needle felt cloth



### HM 16-83 rotary ironer

- Roller diameter 160 mm, Roller width 830 mm
- Throughput at 20% residual moisture max. 15 kg/h
- ARAMID needle felt cloth
- Roller bearings on both sides

#### Technical data

flatwork ironers	HM 16-80	HM 16-83
Roller diameter [mm]	160	160
Roller length [mm]	830	830
Roller padding: Polyester needle felt with ARAMID needle felt cloth	•	•
Heater plate	Aluminium	Aluminium
Electrical connection AC 220–240 V 50–60 Hz	•	•
Heating [kW]	2.6–3.1	2.5–3.0
Total rated load [kW]	2.7–3.2	2.6–3.1
Fuse rating [A]	1 x 13	1 x 13
Steam boiler [kW]	0.85	–
Water tank capacity (ml)	800	–
Steam heat-up	4 mins.	–
Steam availability	40 mins.	–
Throughput (according to DIN 11902) at 20% residual moisture max. [kg/h]	13	15
5-stage speed control [m/min]	2–4.5	2–4.5
Roller speed [rpm]	4–9	4–9
<b>Dimensions, weight</b>		
External dimensions H/W/D [mm]	959/985/380	960/1050/380
Weight [kg]	39	38

• = Standard

# Entire systems from a single supplier



## The office dishwasher G 8050 commercial dishwasher

- Freshwater system
- Optimised for up to 5 programme cycles per day
- 2 levels for maximum load capacity



## The hygiene professionals G 7855/56/59 TD dishwashers

- Freshwater system
- Consistently high cleaning performance and excellent hygiene standards
- Simple switch between loads, e.g. from pots and pans to glassware, without compromising cleaning performance
- G 7859 TD with thermal disinfection programmes
- 2 levels for maximum load capacity
- Shortest programme times of 7 mins. (G 7856)



## The catering dishwasher G 8066 commercial dishwasher

- Tank dishwashing system
- Excellent cleaning performance
- Shortest cycle time 90 secs.
- Very high throughput of 880 plates/h or 40 baskets/h



## The long-distance champion G 8072 commercial dishwasher

- Tank dishwashing system
- Hooded throughfeed dishwasher
- Unique rotating spray arm system
- High level of user convenience, uncomplicated and simple handling
- Shortest cycle time 60 secs.
- Excellent throughput of 1320 plates/h or 60 baskets/h



## The Octoplus class

- Washing machines and tumble dryers with 8 kg load capacity
- The new standard for large laundry machines
- Exceptional performance
- Unrivalled laundry care
- Excellent value



## Professional laundry machines

- Washing machines and tumble dryers with 10–32 kg load capacity
- Barrier washer-extractors for maximum hygiene
- Flatwork ironers for a perfect finish
- Innovative products to meet individual needs

Miele Co. Ltd.  
Fairacres  
Marcham Road, Abingdon  
Oxon OX14 1TW  
Tel. +44 (0)845 365 0555  
Telefax +44 (0)845 365 0777

www.miele-professional.co.uk  
info@miele.co.uk

## Miele worldwide:

### AUSTRALIA

Miele Australia Pty. Ltd.  
1 Gilbert Park Drive  
Knoxfield, VIC, 3180  
Tel. +61(0)3/97 64 71 30  
Telefax +61(0)3/97 64 71 49

### AUSTRIA

Miele Gesellschaft mbH.  
Mielestraße 1  
5071 Wals/Salzburg  
Tel. +43(0)50 800 420  
Telefax +43(0)50 800-81 429

### BELGIUM

N.V. Miele S.A.  
z.5 Mollem 480  
Hof te Bollebeeklaan 9  
1730 Mollem  
Tel. +32(0)2/451 14 11  
Telefax +32(0)2/451 14 14

### CANADA

Miele Limited  
161 Four Valley Drive  
Vaughan, ON L4K 4V8  
Tel. (905) 660-9936  
Telefax (905) 532-2290

### CHILE

Miele Ltda.  
Av. Vitacura 3285  
Vitacura  
Santiago de Chile  
Tel. +56 2 798-9000  
Telefax +56 2 798-9049

### CHINA

Miele Beijing Rep. Office  
3W Suite 512, Oriental Plaza,  
1 East Chang An Avenue  
Dong Cheng District  
Beijing 100738, P.R. China  
Tel. +86 10 85151919  
Telefax +86 10 85181797

### Miele Shanghai

Suite 1102, United Plaza  
1468 Nanjing Road West  
200040 Shanghai, P.R. China  
Tel. +86 21 62884200  
Telefax +86 21 62884100

### CROATIA

Miele d.o.o.  
Buzinski prilaz 32  
10000 Zagreb  
Tel. +385/1/66 89 000  
Telefax +385/1/66 89 090

### CZECH REPUBLIC

Miele spol. s.r.o.  
Hněvkovského 81B  
61700 Brno  
Tel. +420(0)5 4 35 53-1 11  
Telefax +420(0)5 4 35 53-1 19

### DENMARK

Miele A/S  
2600 Glostrup, Erhvervsvej 2  
Tel. +45 43 27 11 00  
Tel. Salg/Professional  
+45 43 27 15 00  
Tel. Jylland +45 97 12 70 66  
Telefax hovednr. +45 43 27 11 09  
Telefax Salg/Professional  
+45 43 27 15 09

### FINLAND

Miele Oy  
Porttikaari 6  
01200 Vantaa  
Tel. +358(0)9 87 59 70  
Telefax +358(0)9 87 59 72 99

### FRANCE

Miele S.A.S.  
9 avenue Albert Einstein  
93151-Le Blanc-Mesnil (Paris)  
Tel. +33(0)1/49 39 34 44  
Telefax +33(0)1/49 39 44 38

### GERMANY

Miele & Cie. KG  
Carl-Miele-Straße 29  
33332 Gütersloh  
Tel. 0 180 220 21 21 (6 ct)\*  
Telefax 0 800 225 57 55  
\*Only in Germany

### GREAT BRITAIN

Miele Co. Ltd.  
Fairacres  
Marcham Road, Abingdon  
Oxon OX14 1TW  
Tel. +44 (0)845 365 0555  
Telefax +44 (0)845 365 0777

### GREECE

Miele Hellas E.P.E.  
Mesogion 257  
154 51 N. Psychiko-Athen  
Tel. national 01/10 6 79 44 44  
international 00 30/2/10 6 79 44 44  
Telefax 01/10 6 79 42 09  
international 00 30/2/10 6 79 42 09

### HUNGARY

Miele Kft.  
Alsó Törökvész út 2.  
1022 Budapest  
Tel. +36 (06) 1 8806-400  
Telefax +36 (0) 1 8006-402

### HONG KONG

Miele (Hong Kong) Ltd.  
41/F - 4101  
Manhattan Place,  
23 Wang Tai Road,  
Kowloon Bay,  
Hong Kong  
Tel. +852/2610 1331  
Telefax +852/2610 1013

### INDIA

Miele India Pvt. Ltd.  
Ground Floor,  
Copia Corporate Suites,  
Commercial Plot No. 9, Jasola,  
New Delhi - 110025  
Tel. +91 (0)11 469000-00  
Telefax +91 (0)11 469000-01

### IRELAND

Miele Ireland Ltd.  
2024 Bianconi Avenue  
Citywest Business Campus  
Tel. +353(0)1/461 07 10  
Telefax +353(0)1/461 07-97

### ITALY

Miele Italia S.r.l.  
Strada di Circonvallazione, 27  
39057 S. Michele-Appiano (BZ)  
Tel. +39 04 71/66 61 11  
Telefax +39 04 71/66 63 50

### JAPAN

Miele Japan Corp.  
E Space Tower 11F  
3-6 Maruyamacho  
Shibuya-ku Tokyo  
150-0044 Japan  
Tel. +81(3)5784-0030  
Telefax +81(3)5784-0035

### KAZAKHSTAN

Miele LLP  
Building 1B (office 602)  
Al-Farabi Pr. 13  
050059 Almaty  
Tel. +7 727 3111141  
Telefax +7 727 3111042

### KOREA

Miele Korea Limited  
Miele Haus, 607-10 Yeoksam-dong  
Gangnam-gu  
Seoul 135-080  
Tel. +82 2 3451 9353  
Telefax +82 2 3451 9399

### LATVIA

Miele SIA  
Kr. Valdemāra 21-621  
1010 RIGA  
Tel. +371 6 7035232  
Telefax +371 6 7035252

### LUXEMBOURG

Miele s.à.r.l.  
20, Rue Christophe Plantin  
2339 Luxembourg  
Tel. +352/4 97 11-25  
Telefax +352/4 97 11-39

### MEXICO

Miele S.A. de C.V.  
Av. Santa Fé 170  
German Centre 0-4-2  
Col. Lomas de Santa Fé  
C.P. 01210 México, D.F.  
Tel. +52/55 85 03 98 70  
Telefax +52/55 85 03 98 74

### NETHERLANDS

Miele Nederland B.V.  
De Limiet 2  
4131 NR Vianen  
Tel. +31(0)3 47/37 88 83  
Telefax +31(0)3 47/37 84 29

### NEW ZEALAND

Miele New Zealand Ltd.  
Unit L, 10-20 Sylvia Park Road  
Mt. Wellington, 1060 Auckland  
Tel. +64(0)9/573 1269  
Telefax +64(0)9/573 1268

### NORWAY

Miele AS  
Løxaveien 13  
1351 Rud  
Tel. +47/67 17 31 00  
Telefax +47/67 17 31 10

### POLAND

Miele Sp. z. o. o.  
ul. Gotarda 9  
02-683 Warszawa  
Tel. +48/022/5 48 40 00  
Telefax +48/022/5 48 40 10

### PORTUGAL

Miele Portuguesa, Lda.  
Av. do Forte, 5  
2790-073 Carnaxide  
Tel. +351/21/42 48-100  
Telefax +351/21/42 48-109

### ROMANIA

Miele Appliances SRL  
Intrarea Narciselor 8  
OTOPENI  
Jud. Ilfov  
Tel. +40 21 3520777  
Telefax +40 21 3520776

### RUSSIA

000 Miele CIS  
Leningradsky Prospekt, 39A  
125167 Moscow  
Tel. +7(8)495 745-8992  
Telefax +7(8)495 745-8680

### SERBIA

Miele d.o.o. Beograd  
Palmoticeva 16A  
BEOGRAD - Stari Grad 11000

### SINGAPORE

Miele Pte. Ltd.  
163 Penang Road #04-02/03  
Winsland House II  
Singapore 238463  
Tel. +65/67 35 11 91  
Telefax +65/67 35 11 61

### SLOVAKIA

Miele spol. s. r. o.  
Plynárenská 1  
82109 Bratislava  
Tel. +421/2/58 10 31 11  
Telefax +421/2/58 10 31 19

### SLOVENIA

Miele d.o.o.  
Brncičeva 41 g  
1000 Ljubljana  
Tel. +386 (0)1563 44-80  
Telefax +386 (0) 1563 44-90

### SOUTH AFRICA

Miele SA (Pty) Ltd.  
63 Peter Place  
Bryanston 2194  
Tel. +27(0)11/5 48-19 00  
Telefax +27(0)11/5 48-19 35

### SPAIN

Miele S.A.U.  
Carretera de Fuencarral, 20  
28108 Alcobendas (Madrid)  
Tel. +34/91/6 23 20 00  
Telefax +34/91/6 62 02 66

### SWEDEN

Miele AB  
Industrivägen 20  
Box 1397  
171 27 Solna  
Tel. +46(0)8/5 62 29-000  
Telefax +46(0)8/5 62 29-209

### SWITZERLAND

Miele AG  
Limmatstr. 4  
8957 Spreitenbach  
Tel. +41(0)56/4 17 20 00  
Telefax +41(0)56/4 17-24 69

### TURKEY

Miele Elektrikli Aletler  
Diş. Tic. ve Paz. Ltd. Şti.  
Güvercin Sokak No. 10  
34330 Levent-Istanbul  
Tel. +90/2 12/3 86-08 00  
Telefax +90/2 12/3 25 84 49

### UKRAINE

Miele LLC  
Zhylyanskaya Str. 48, 50 A  
01033 Kiev  
Tel. +38 (8)044 4960300  
Telefax +38 (8)044 4942285

### UNITED ARAB EMIRATES

Miele Appliances Ltd.  
Gold & Diamond Park  
Sheikh Zayed Road  
Building No. 6,  
Offices No. 219  
Dubai  
Tel. +971 4 3418444  
Telefax +971 4 3418852

### USA

Miele, Inc.  
9 Independence Way  
Princeton, NJ 08540  
Tel. 001-800/843 72 31  
Telefax 001-609/419 42 41

### OTHER COUNTRIES:

Sales International  
Miele & Cie. KG  
Carl-Miele-Straße 29  
33332 Gütersloh  
Tel. +49(0)52 41-89 15 07  
Telefax +49(0)52 41-89 15 00