



Green Clean Washing



The North's
#1 provider

Miele
PROFESSIONAL

Guide to Washing and Disinfecting
for Veterinary Practices

About this Guide

This guide has been designed to give you an overview of why using the right laundry machines and washer disinfectors in your practice is important. They can help to

- Reduce cross infection rates and keep infection under control
- Ensure compliance with legislation from WRAS
- Reduce water usage and efficiency
- Improve washing results and stain removal



WRAS Category 5 Regulations

WRAS
Water Regulations Advisory Scheme

Water Regulations Advisory Scheme (WRAS) Category 5 regulations are important to know about if you are running a veterinary practice. WRAS define Category 5 fluids as those that carry a significant health risk, and are not just confined to Hospitals and Nursing Homes, WRAS consider veterinary practices as a Category 5 risk. This means that if you are a veterinary practice, washing soiled blankets or bedding that sick animals have been using or you are washing staff uniforms, then you need to make sure that the washing machines you are using comply with WRAS guidance.

All WRAS compliant washing machines have been designed to ensure that the waste water cannot flow back and contaminate the fresh water supply as stipulated in the WRAS Fluid Category 5 guidelines. Therefore if you are currently using a domestic washing machine in your practice, unless the plumbing supply provides back flow protection to Fluid Category 5, then you are not WRAS compliant and you could be served with an improvement notice. This could result in your practice being closed until you get the appropriate washing machine in place, or adjust your onsite plumbing to the required standard.



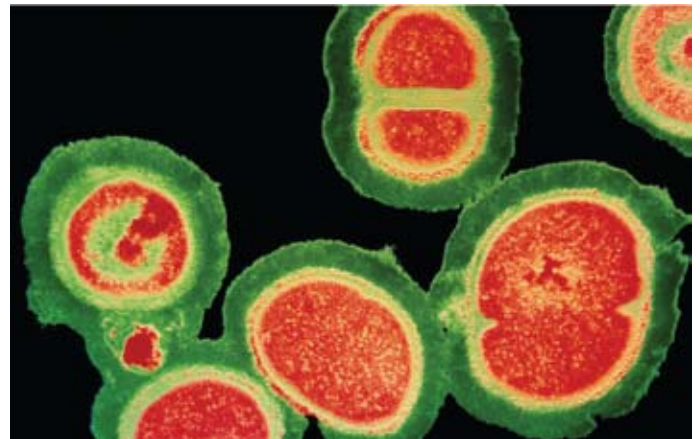
Check out the WRAS video on our website
www.jtmservice.co.uk/wras-compliance

Is Your Washing Machine or Plumbing Supply Compliant?

If you are not sure that the washing machine or plumbing supply you currently have in place is WRAS compliant, just give JTM Service a call on 0800 652 5692 and we will advise on how to check your current water supply. If it does not comply, we can let you know the solutions available so that you can decide the best one for your particular situation.

Your Infection Control Procedures

As a Vet you know that your practice is not immune from the risk of hospital acquired infections and that these are occurring more and more. Therefore it's vitally important that you continually review your infection control procedures which include the washing of clothes, bedding and blankets. There is a real need to make sure you have a process for ensuring that all laundry is washed and disinfected to kill bacteria and help reduce any spread of infection such as MRSA.



MRSA cells dividing

Sometimes this aspect of infection control can be overlooked, with a belief that a hot wash in a domestic washing machine will suitably disinfect your veterinary laundry. This is simply not the case. You need to use machines that have a dedicated disinfection programme to ensure you are killing bacteria. This is especially important for your employees because if they wash their uniforms at home, they will not be disinfecting them effectively and may be carrying superbugs such as MRSA on their clothing. Therefore it is advisable that all uniforms are washed, with a suitable disinfection detergent or on a thermal wash cycle.

Busy Surgery = Lots of Laundry

Having a busy surgery is great, but it can also generate a constant stream of laundry that needs to be cleaned effectively so that it is safe and provides protection for the animals and the staff in your care.

From cleaning bedding to blankets there are a whole range of materials that you need to wash on a regular basis. However, using a domestic washing machine does not provide the rigorous cleaning you need to minimise cross infection and also conform with WRAS Fluid Category 5 regulations. In addition, domestic machines generally, just aren't big enough or robust enough to cope with the amount of washing that you need to do on a regular basis.

What are the Differences Between Commercial and Domestic Washing Machines?

To help you understand the main differences between domestic and commercial machines take a look at the table below.

Domestic	Commercial
Domestic machines are inexpensive but they are not built for the type of washing and cleaning a veterinary practice requires, so they are prone to breakdowns and parts failure.	Commercial washing machines do cost more than domestic appliances but they are built to take larger loads and are less likely to suffer breakdowns and parts failure over their much longer lifespan.
Small drum size which means that you are restricted to the amount you can wash at one time.	Large drum size allowing you to wash large items and increase the amount you can wash with each load.
Washing programmes are for domestic use only and don't cater for disinfection etc.	Washing programmes are specialised and can be changed to suit your specific needs, if you need to wash large or particularly dirty or stained items. They can also come pre-programmed with specialist programmes for veterinary practices
Domestic machines can become clogged up with hair and residue that can build up on pumps and heater elements, causing breakdowns	Commercial machines have a gravity dump value that means much of the dirt and hair is "dumped" out of the machine, reducing build up on parts and reducing breakdowns
Drums are designed for domestic use and can have a detrimental effect on the type of bedding and blankets you are washing	Specialist drums provide thorough but gentle cleaning action increasing the lifespan of your bedding and uniforms
Domestic tumble dryers don't have the capacity to dry large amounts and the filters are not designed to cope with large amounts of hair	With larger capacity and special filters, commercial tumble dryers can dry large amounts quickly and easily

Lack of Space?

Are you worried that you won't have enough space for a commercial washing machine and or a tumble dryer?

This isn't a problem.

Some of the machines have been developed to provide a good load capacity within a machine that isn't much bigger than a domestic one. If you require a tumble dryer as well, they can be stacked together so that you make the most of the laundry space available.



What about Water and Energy Usage?

Commercial washing machines have been designed to make the most of the water that they use and many are rated A+AA to give outstanding water usage and energy consumption. In fact many commercial machines can provide more efficient wash cycles than their domestic counterparts. So investing in a commercial washing machine could in the long term reduce your water and energy costs.

View the energy rating document on our website www.jtmservice.co.uk/miele-energy-rating/

What Type of Machines do I Need?

You need to make sure that you have a washing machine with at least a 6kg capacity and a thermal disinfection wash programme. Most importantly the machines must adhere to WRAS Fluid Category 5 Regulations if connected to a mains water supply. This will ensure you have complied with legislation and also provide you with control and peace of mind over any possible back flow infection.

These are some of the washing machines and tumble dryers we would recommend for a veterinary practice



Miele PW 6065

The Miele PW 6065 is a great value commercial washing machine. It has a good drum capacity of 6.5kg and, a spin speed of 1400rpm. It also comes with electronic controls that allow you to specify the specialist cleaning programmes you want such as a thermal disinfection cycle, which is important when you want to clean bedding or uniforms thoroughly.



Miele PW 6080

If you need extra capacity then the Miele PW6080 Octoplus machine offers a drum capacity of 8kg as well as all the electronic control to give you a range of programmes that will clean and disinfect your bedding and blankets.



Miele PT 7136

The Miele PT7136 6.5 kg vented tumble dryer is ideal for small practices, so you can dry bedding and uniforms quickly and easily. Also if you don't have any outside ventilation in your laundry room, a condenser version is available that empties the condensed water into a drain outlet. This machine will also stack on the matching washing machine if space is an issue.



Miele PT7186

The Miele PT7186 Octoplus tumble dryer gives you more drying capacity with an 8kg load, which is perfect if you have larger items to dry such as blankets. This is a vented tumble dryer which means it is ideal if you have an outside wall for venting. It is available with either electric or gas heat.

What Detergent Should I Use?

It's important to choose a detergent that doesn't cause skin irritations, so when choosing a detergent for your practice, look for ones that have an Eco label or have been endorsed by the Eczema Society. This will ensure that any bedding or clothes that have been washed won't cause either you or your animals to suffer from skin rashes or irritation due to the chemicals used in production.

We also recommend that you use a sachet based commercial detergent like Aquados which contains the correct dose in each sachet and only dissolves when it comes into contact with water. Using sachets not only makes sure that you are using the right dosage for the machine but also means that the detergent does not have the opportunity to come into contact with your skin or raise the risk of dust being inhaled whilst you are adding it to the soap drawer.

For more delicate fabrics that you may need to disinfect, but need to wash at lower temperatures, try using a detergent such as Fabrix. This type of laundry detergent will kill superbugs at temperatures as low as 40 degrees C which is ideal for routine cleaning of laundry that cannot be safely disinfected thermally.

What About Disinfecting Surgical Instruments?



All your surgical instruments need to be disinfected to the same standards as those in human surgery to ensure that there is no cross infection and your operating equipment is kept clean. Manually sterilising all the instruments can be time consuming with the small units that many veterinary practices use today. So having a washer disinfector can be a great timesaving and economical device, as you can re-process a large number of instruments at once without the risk of cross infection.

The latest washer disinfectors allow you to:

- Clean hollow instruments using injector jets which clean inside and remove bugs
- Quickly load the machine, so you and your team have more time to look after your patients
- Wash at the right temperature to disinfect but that also doesn't degrade the instruments
- Minimise the risk of infection in the practice team as there is minimum handling of instruments as well as work related injuries when skin has come into contact with disinfectant agents
- Disinfect and conform to EN ISO 15883
- Install the units in small spaces, the Miele G7831 is only 45cm wide.

We can, in conjunction with Miele UK, provide a specialist service to assess your clinical warewashing requirements.

How Do I Select the Right Equipment for My Practice?

This guide has highlighted some of the key areas where you may need to make changes. You may have a domestic washing machine that is not WRAS compliant or maybe you are not sure about how to develop an infection control procedure for your laundry area?

Whatever your questions are about laundry and sterilising instruments, just give us a call on 0800 652 5692 and we will be happy to help. We have worked with many Vets and can give you best practice advice on how to ensure you are within the WRAS guidelines and how to minimise the risk of infection.

About JTM Service

JTM Service is dedicated to delivering specialist laundry and cleaning products and services to a wide range of organisations including veterinary practices. With over 27 years experience we focus on helping organisations just like yours to have the most practical, clean and energy efficient laundry rooms possible. And what's more we have a team of dedicated service engineers to keep them that way.

We focus on delivering outstanding results for you on a consistent basis by giving you the assurance and peace of mind that, no matter what your laundry or cleaning requirements, we will deliver the results you need.

Partnerships



As founder members of the Miele Professional Partnership we make sure that we provide you with the best laundry and cleaning equipment, backed up by the latest technology and exceptional support service.

Service and Support

We are here to make sure you get the results you want from your commercial washing equipment and if you're not, for any reason, we'll find a way to fix it. It's a fact that means your equipment (existing or new) can be up and running again quickly without any real disruptions.



Quote from Balanced Being - Wetherby

"We have worked with JTM Service Ltd for 8 years now and during that time we have only needed one service visit and even that was due to a blockage in the machine and not a mechanical breakdown. I have been delighted with the reliability of the Miele machines and the advice and support given by JTM has been excellent"

Sue Armstrong
MA VetMB VetMFFHom CertIAVH MRCVS RSHom



Green Clean Washing

JTM Service Ltd
6 Milestone Court
Stanningley
Leeds
LS28 6HE

T: 0800 652 5692
E: info@jtmservice.com
w: www.jtmservice.co.uk

